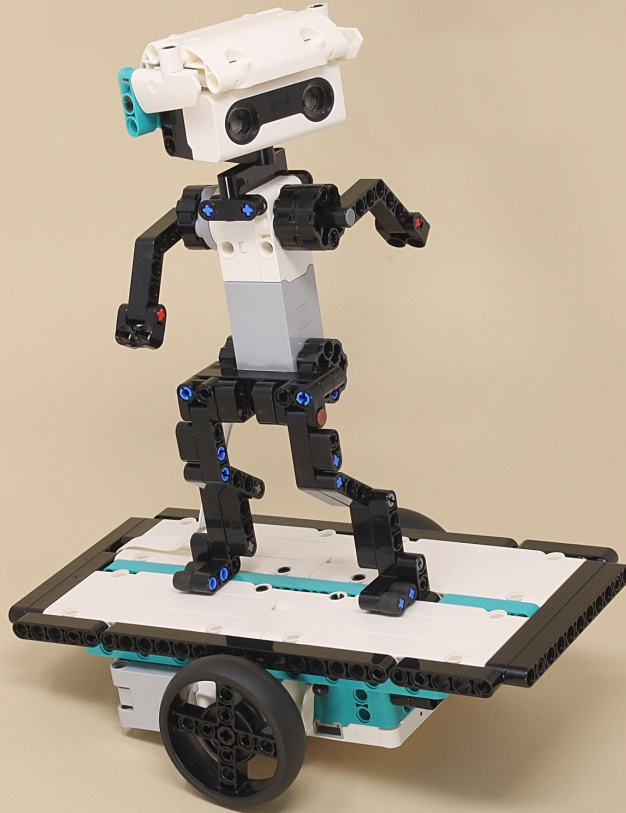
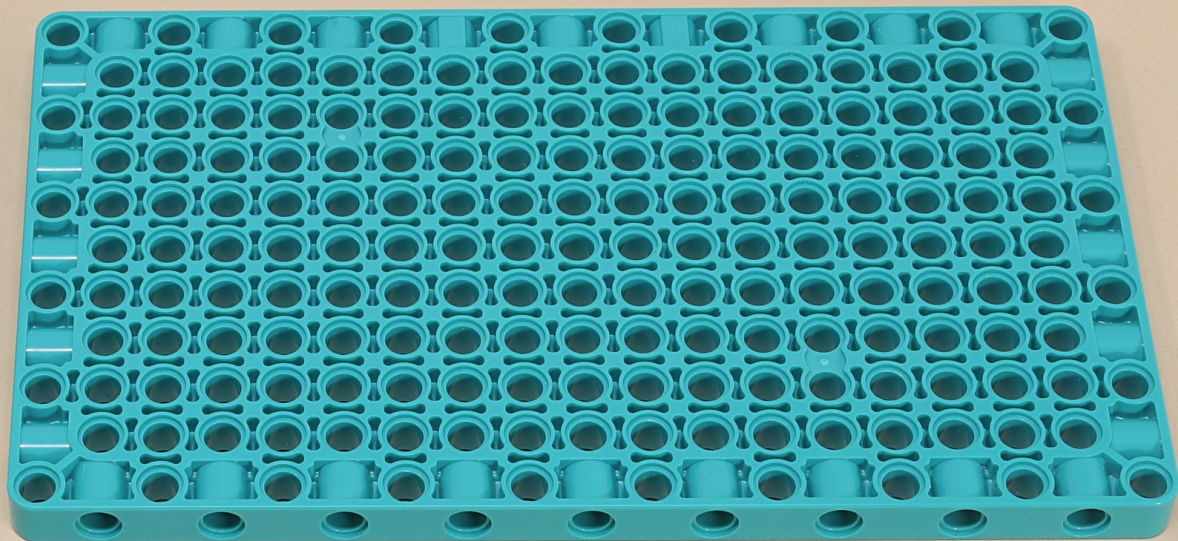


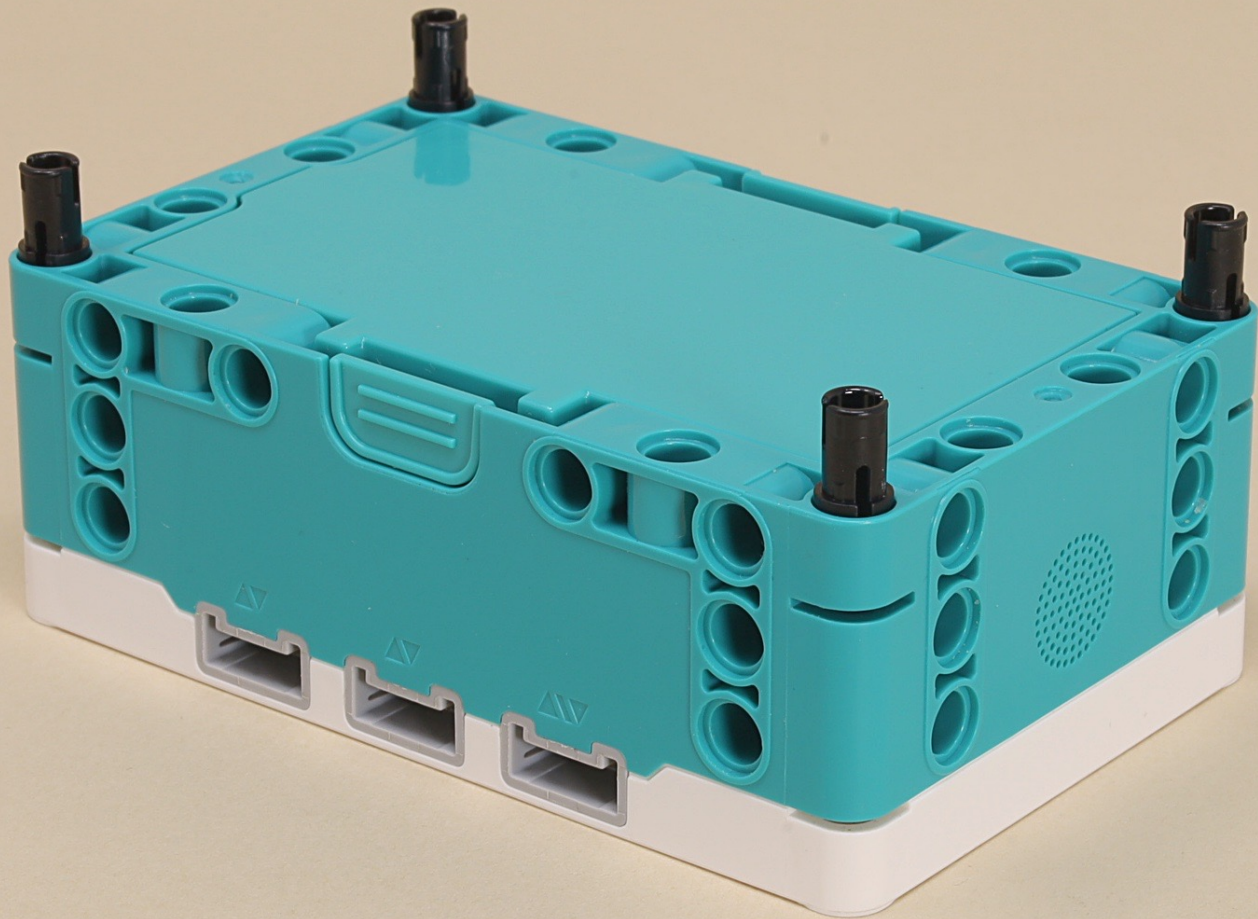
# Balance Board

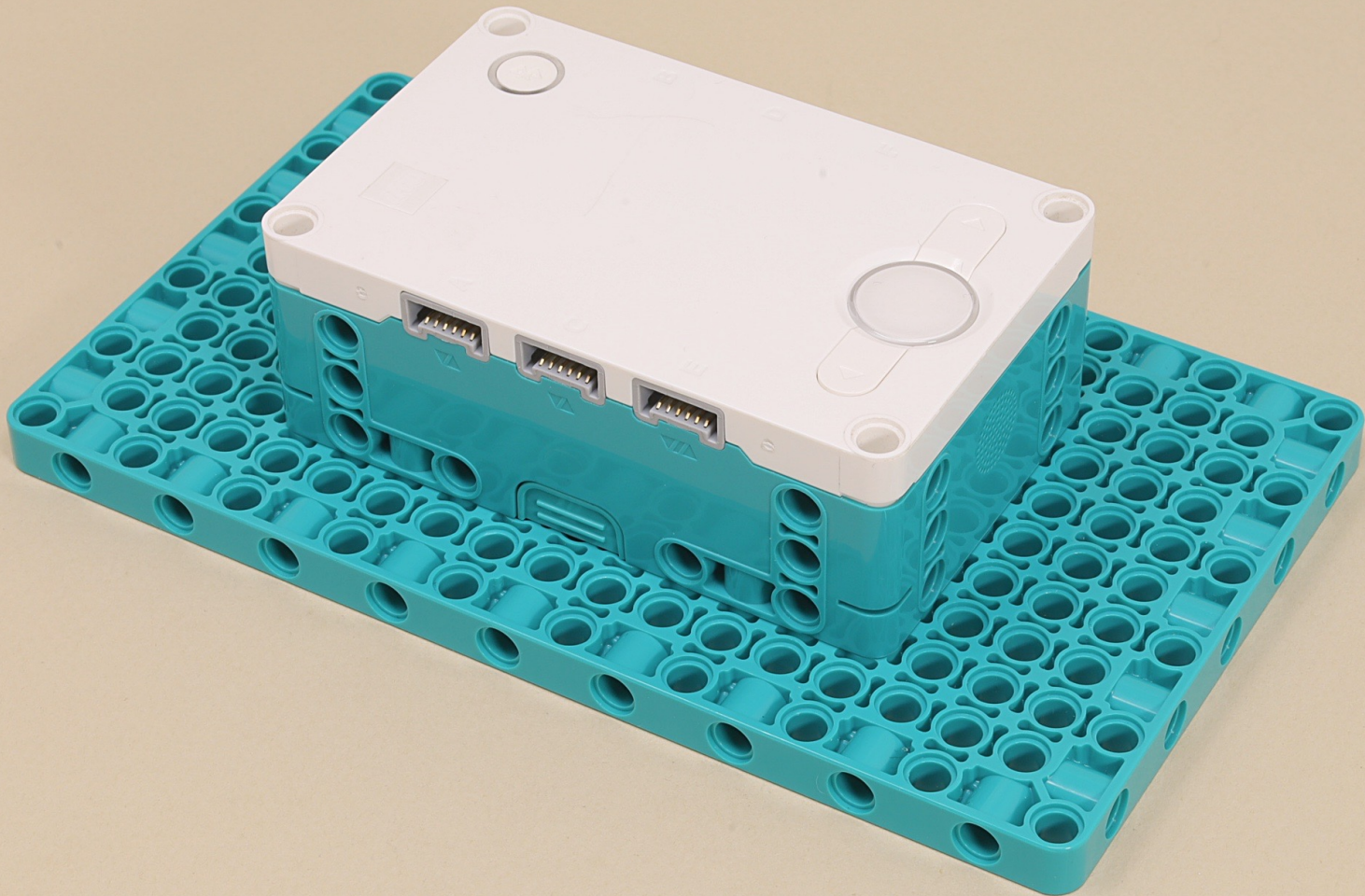


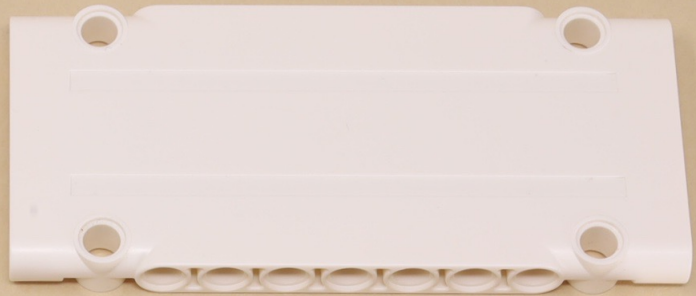
Scroll for  
building  
instructions





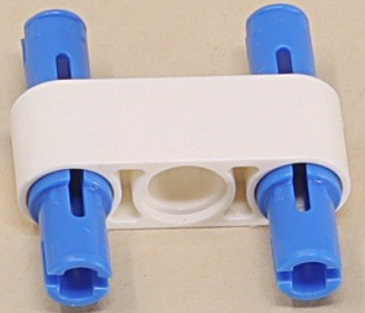
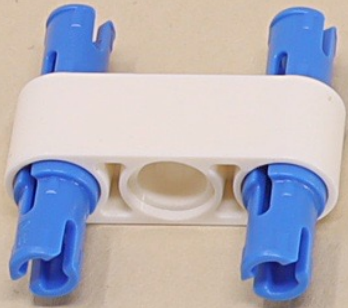


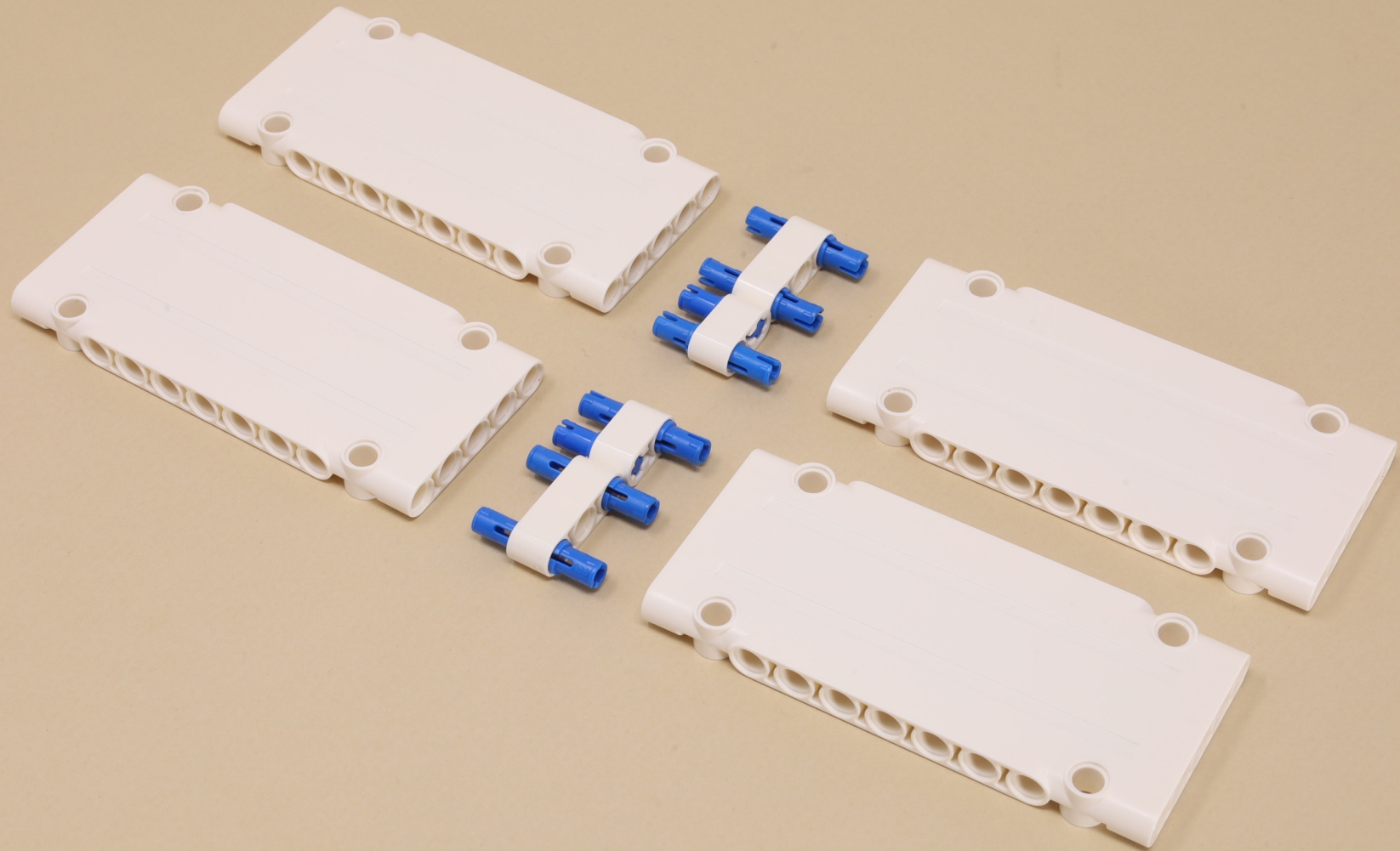


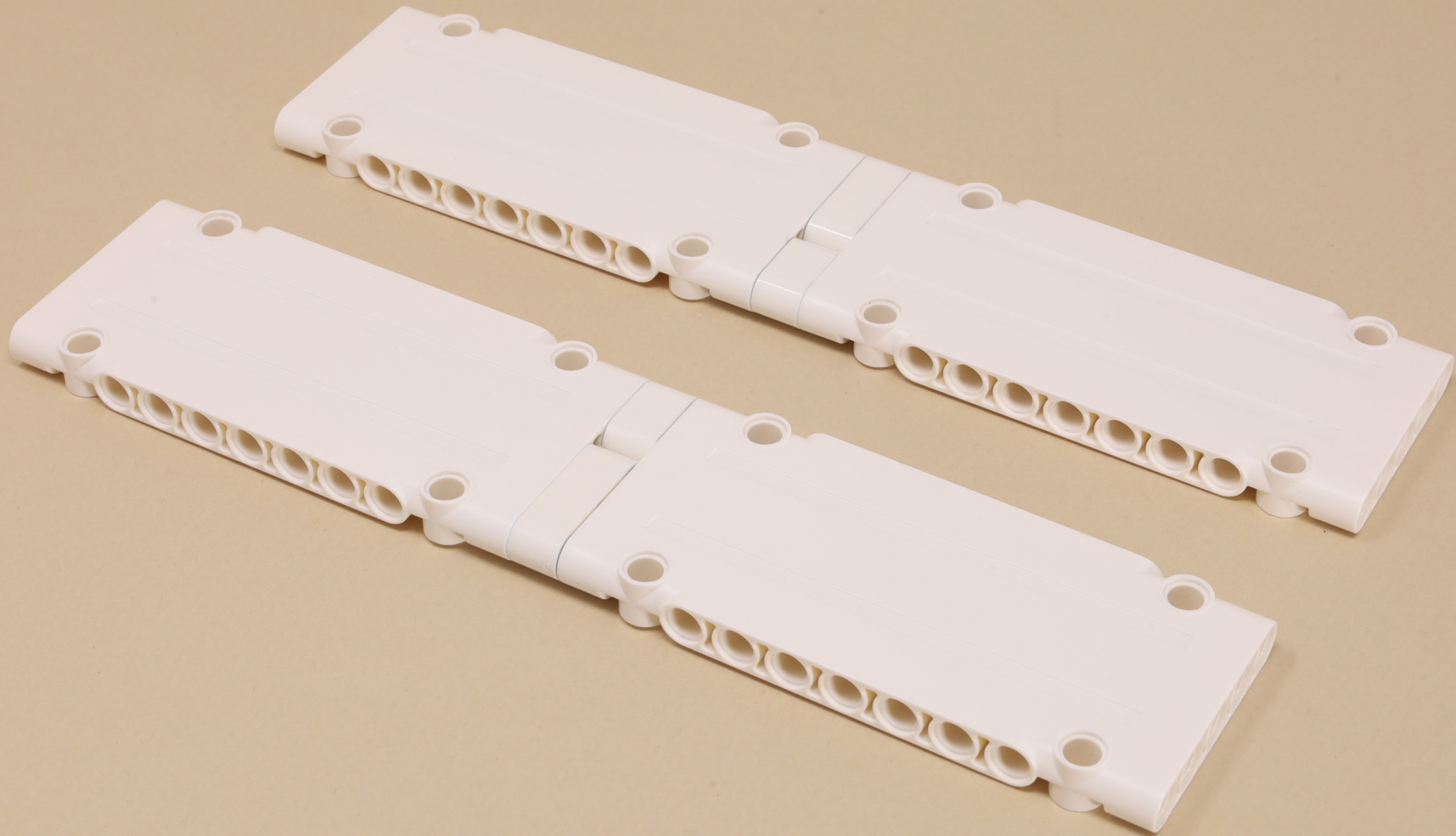


(6 x)









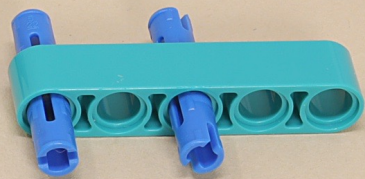
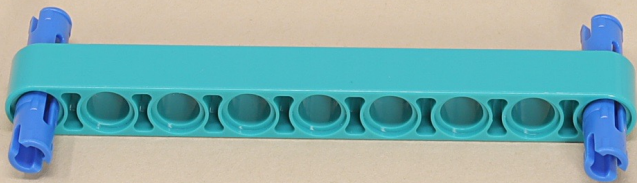
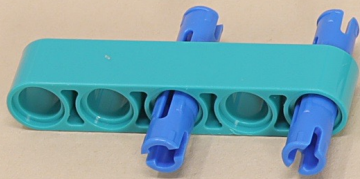
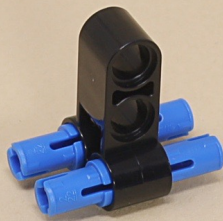


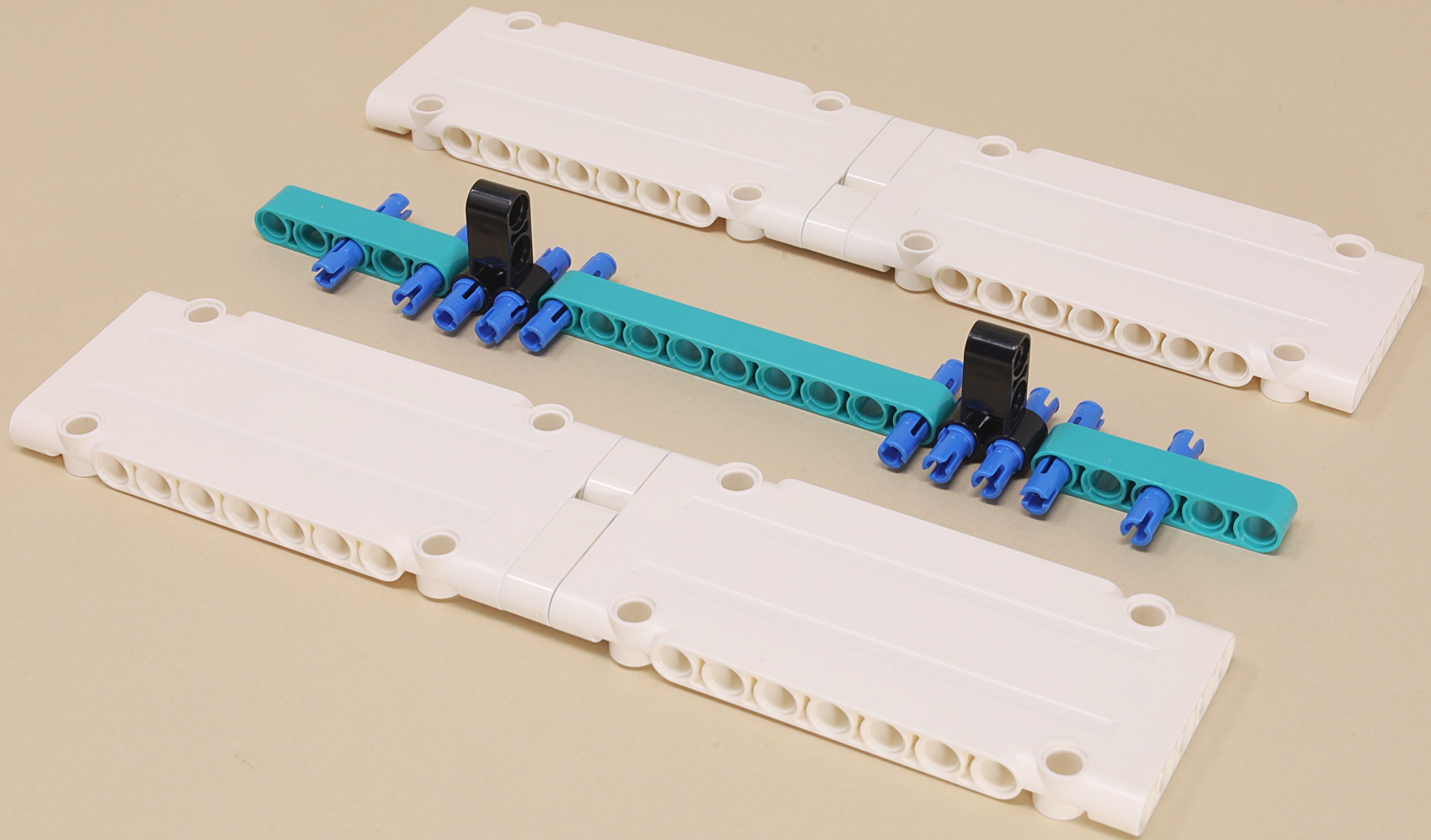


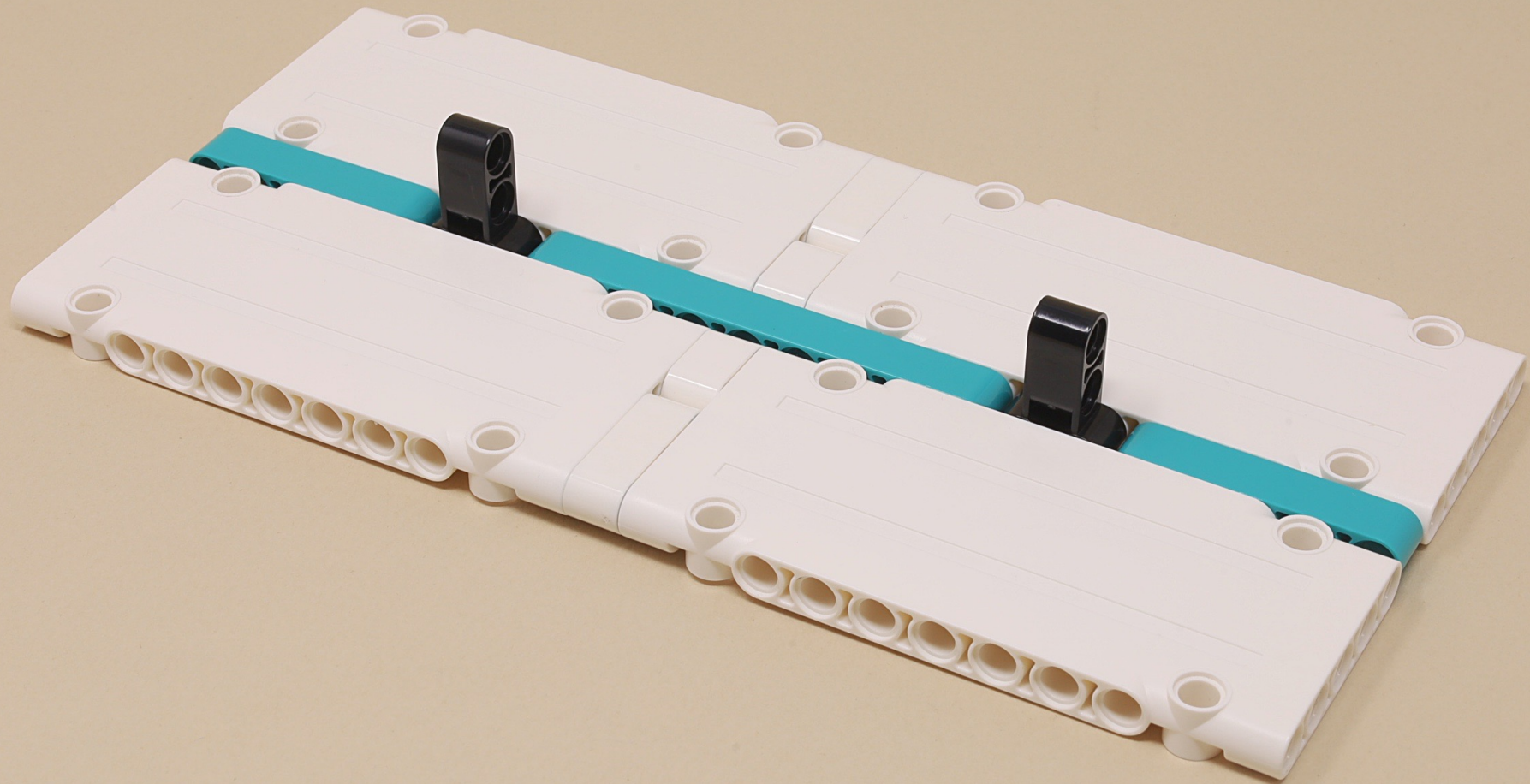
9



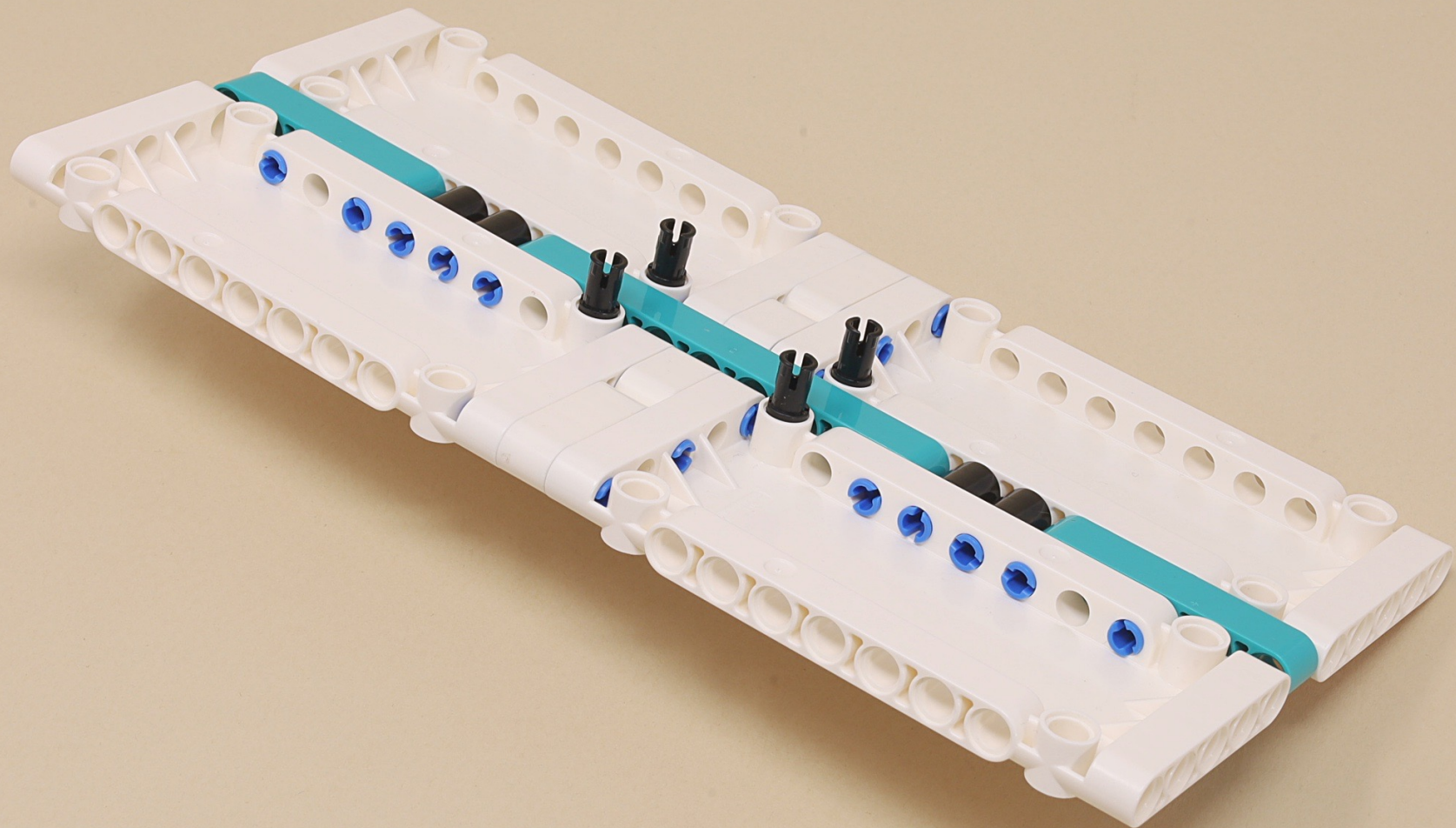
(10 x)

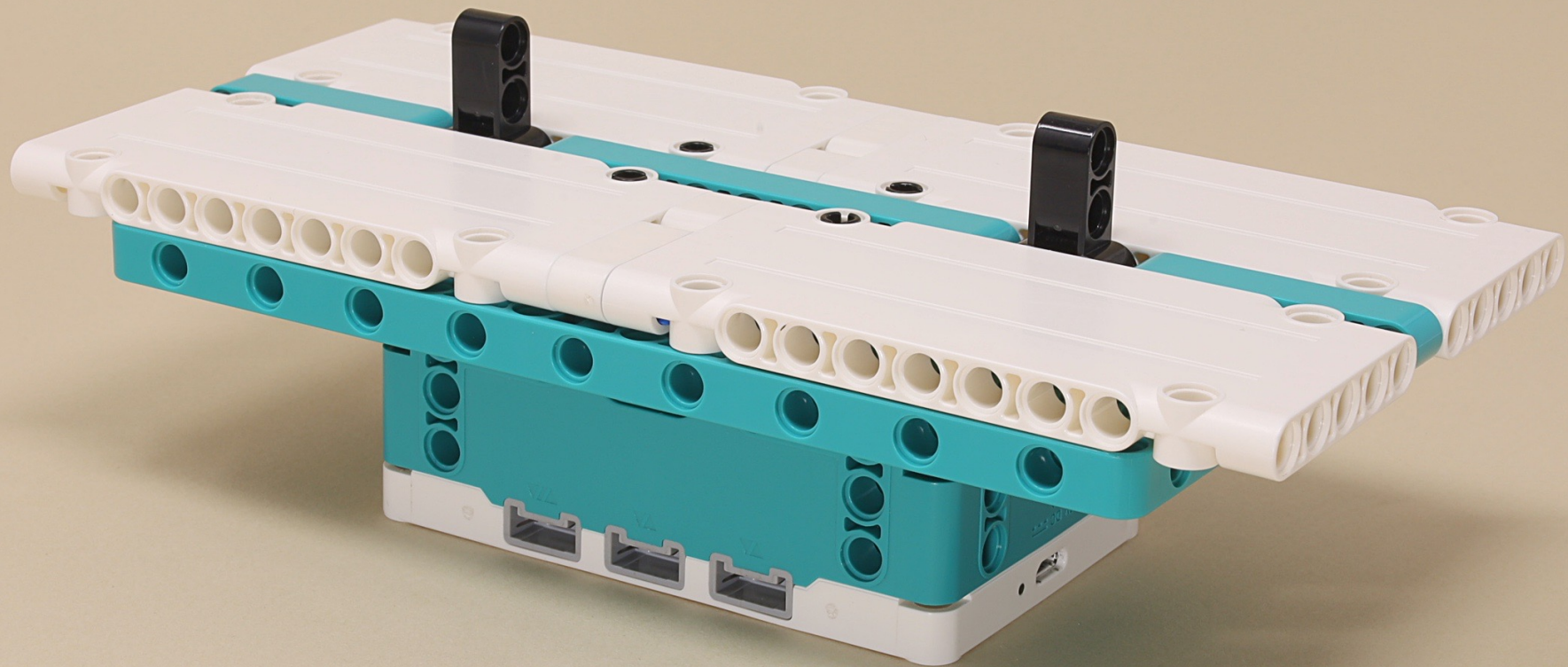


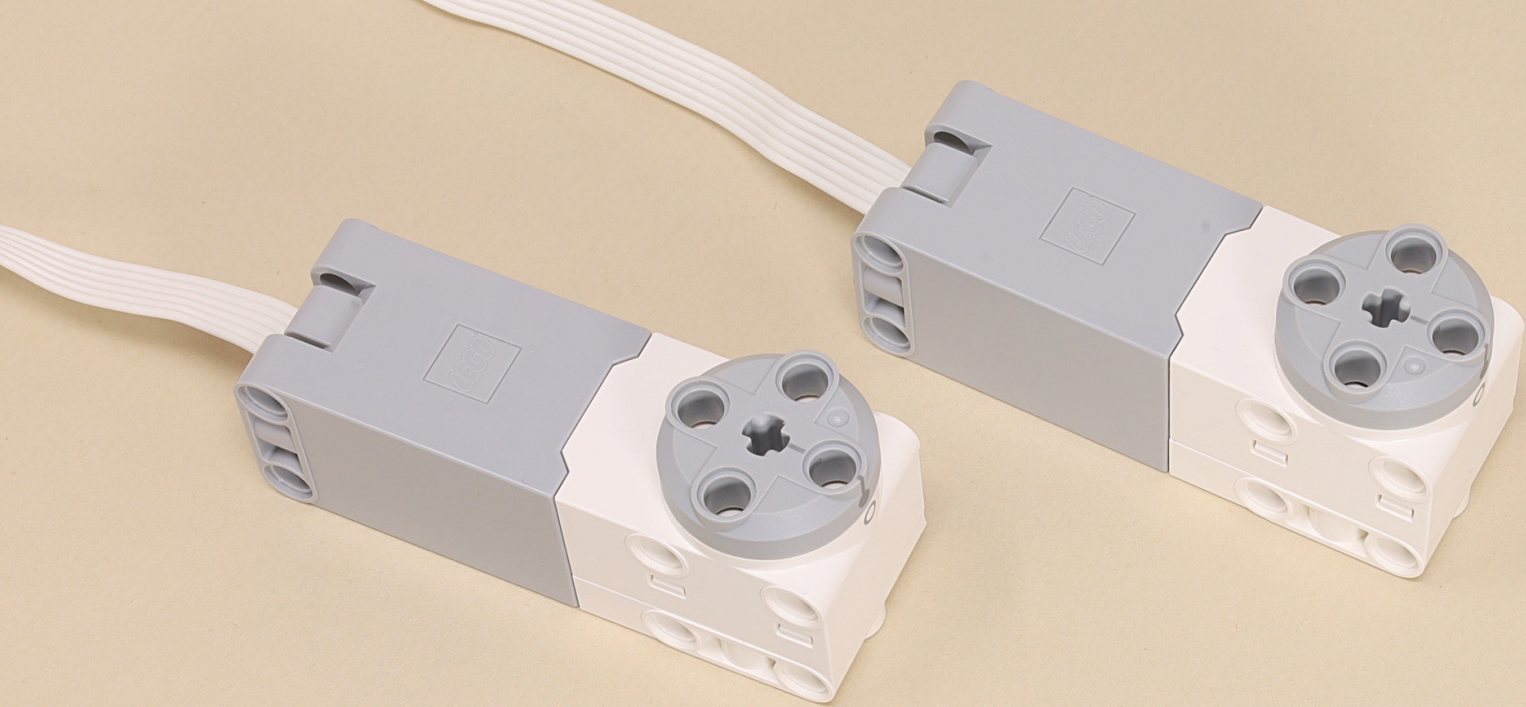






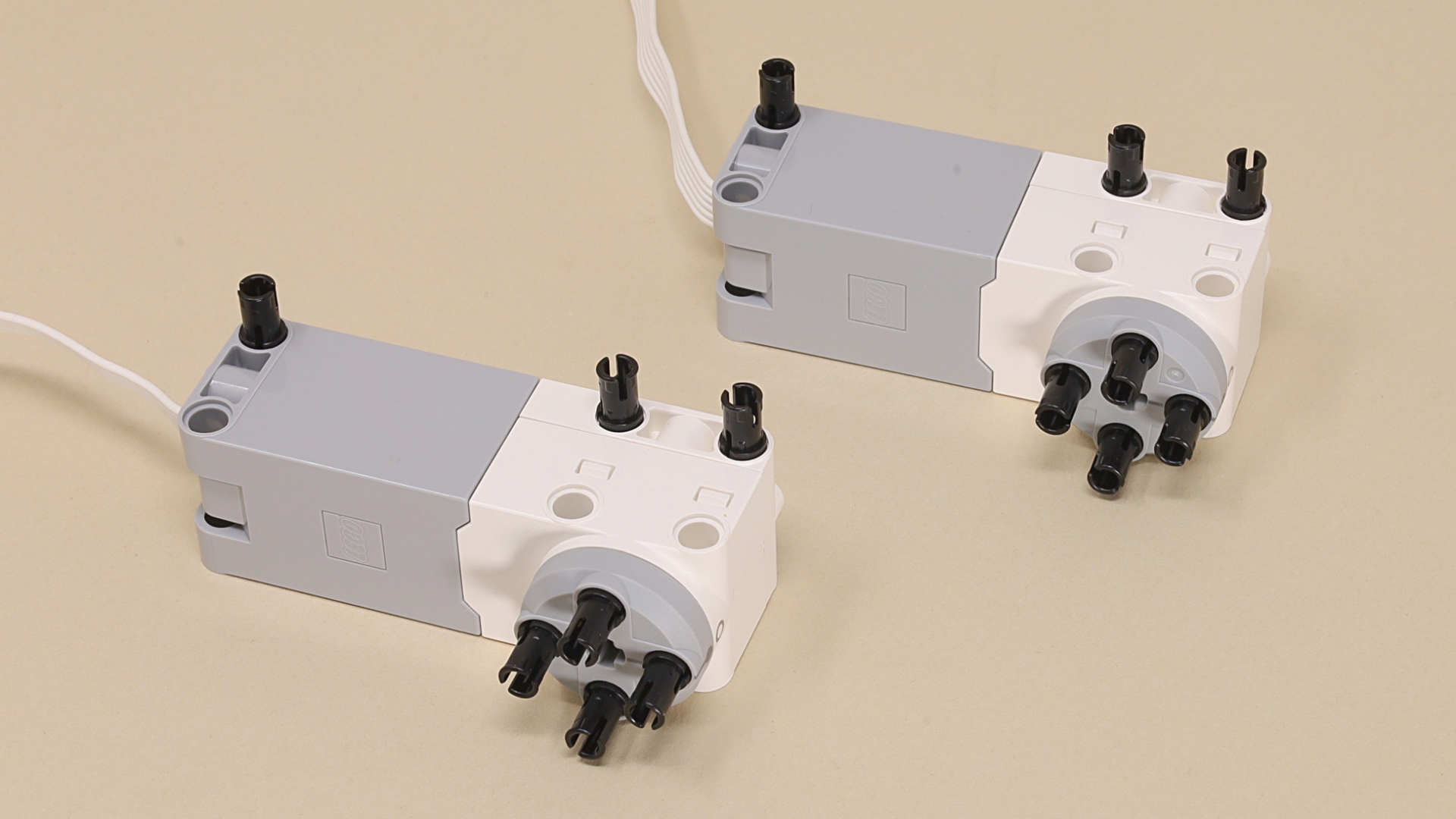


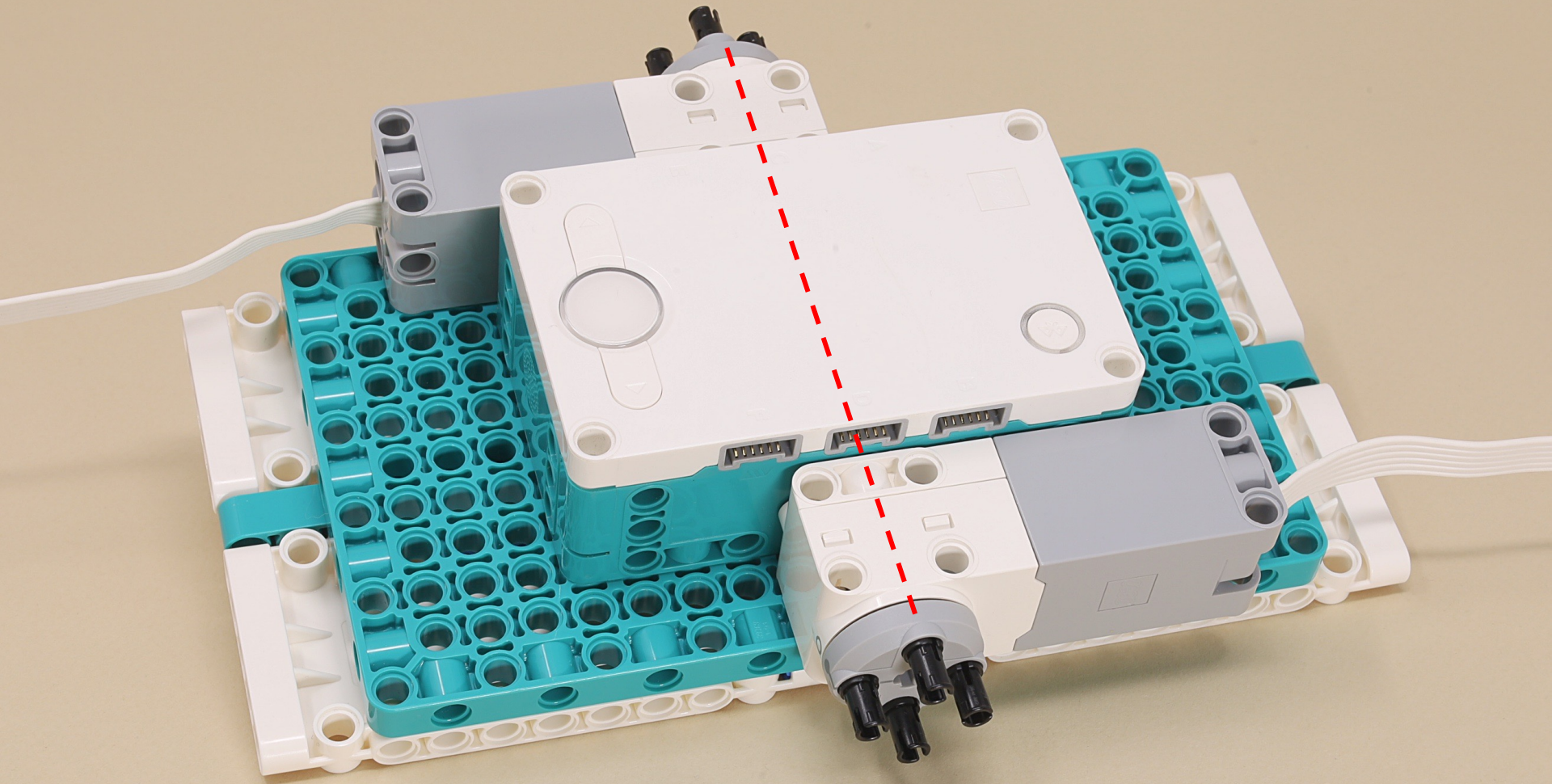




**(14 x)**









7



7

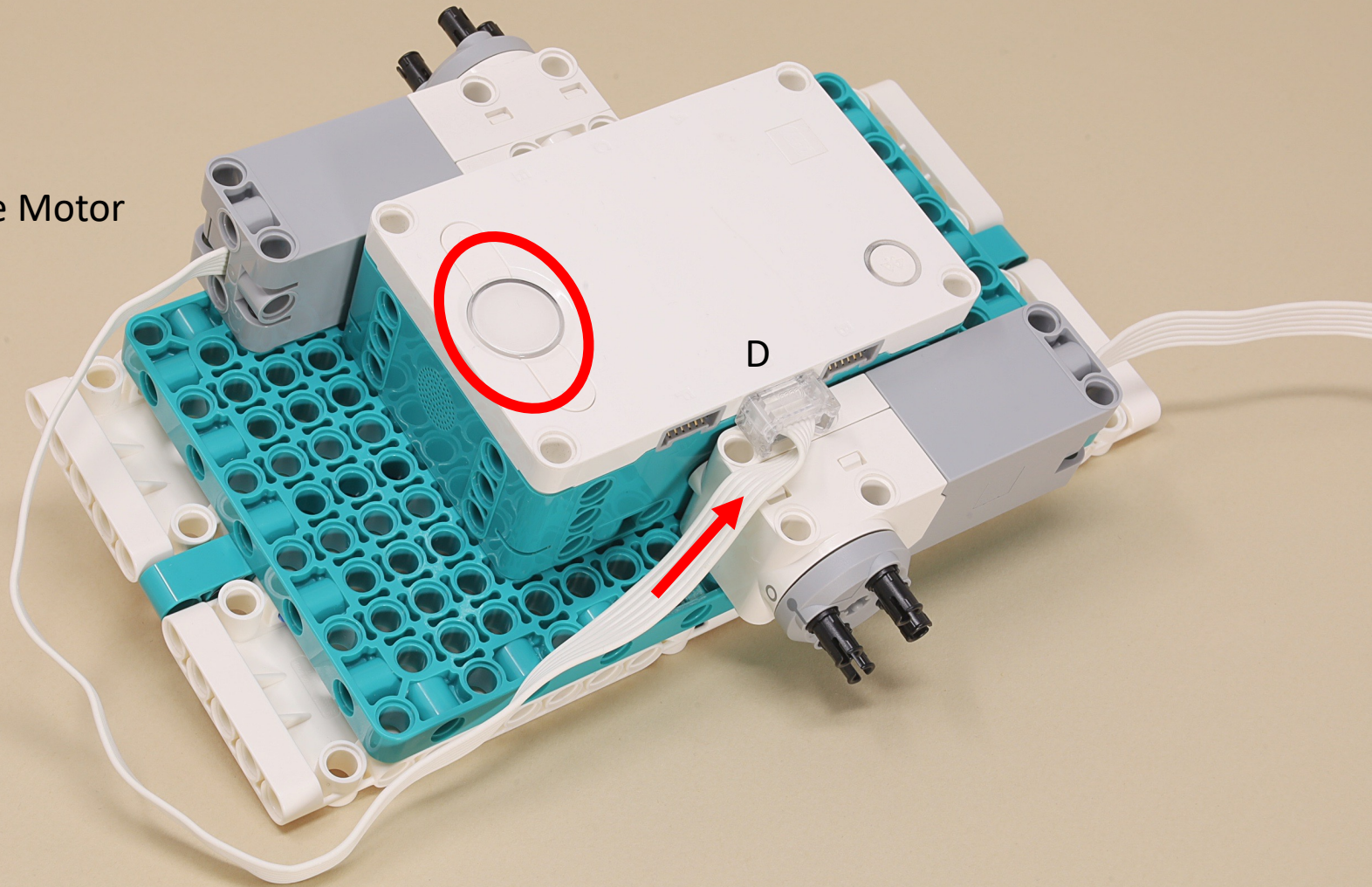


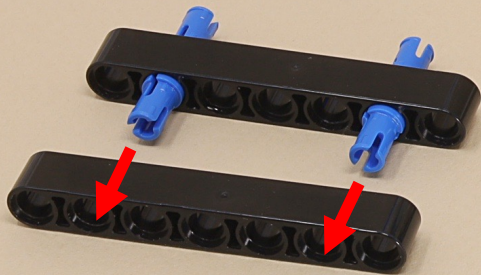
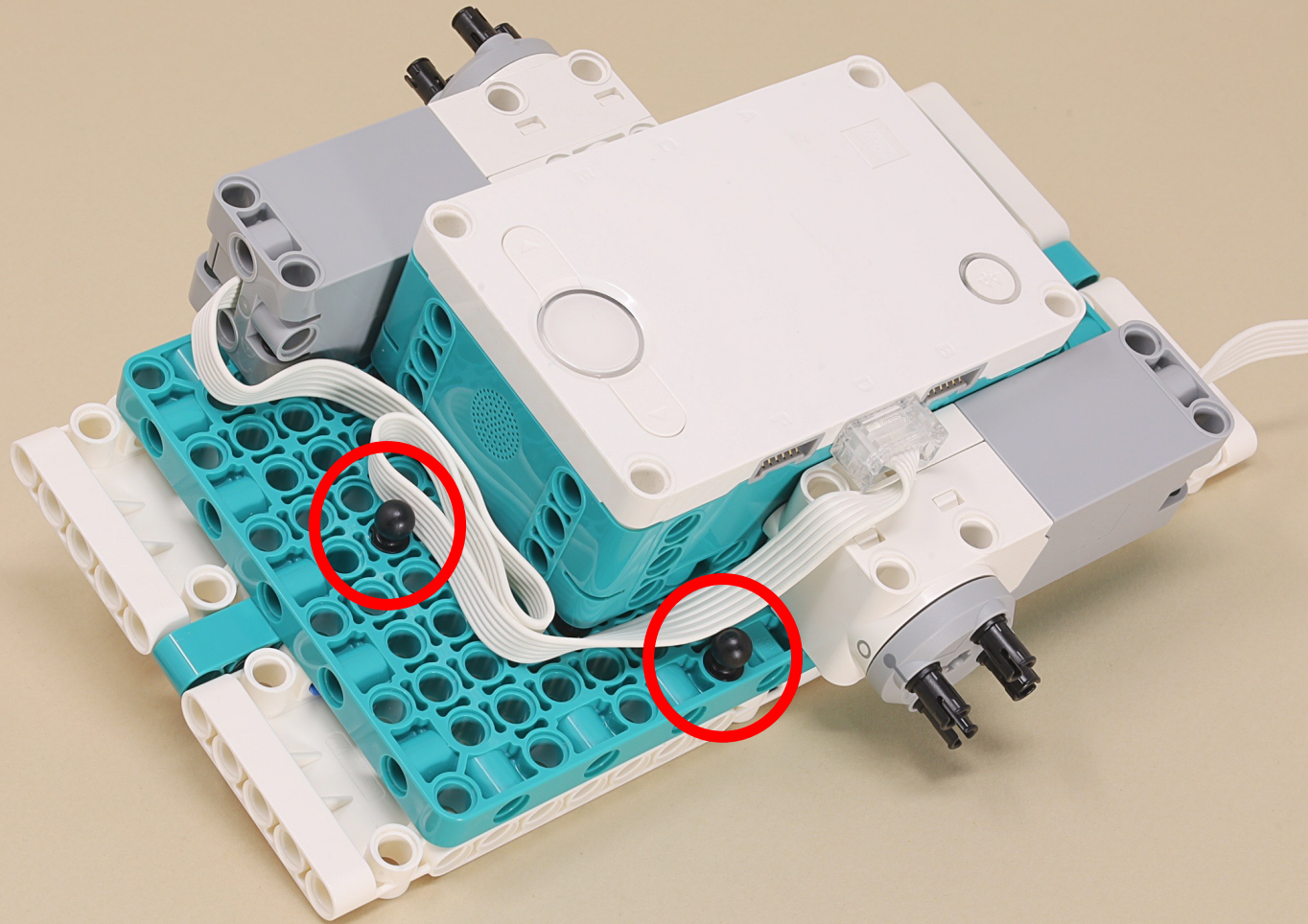
7

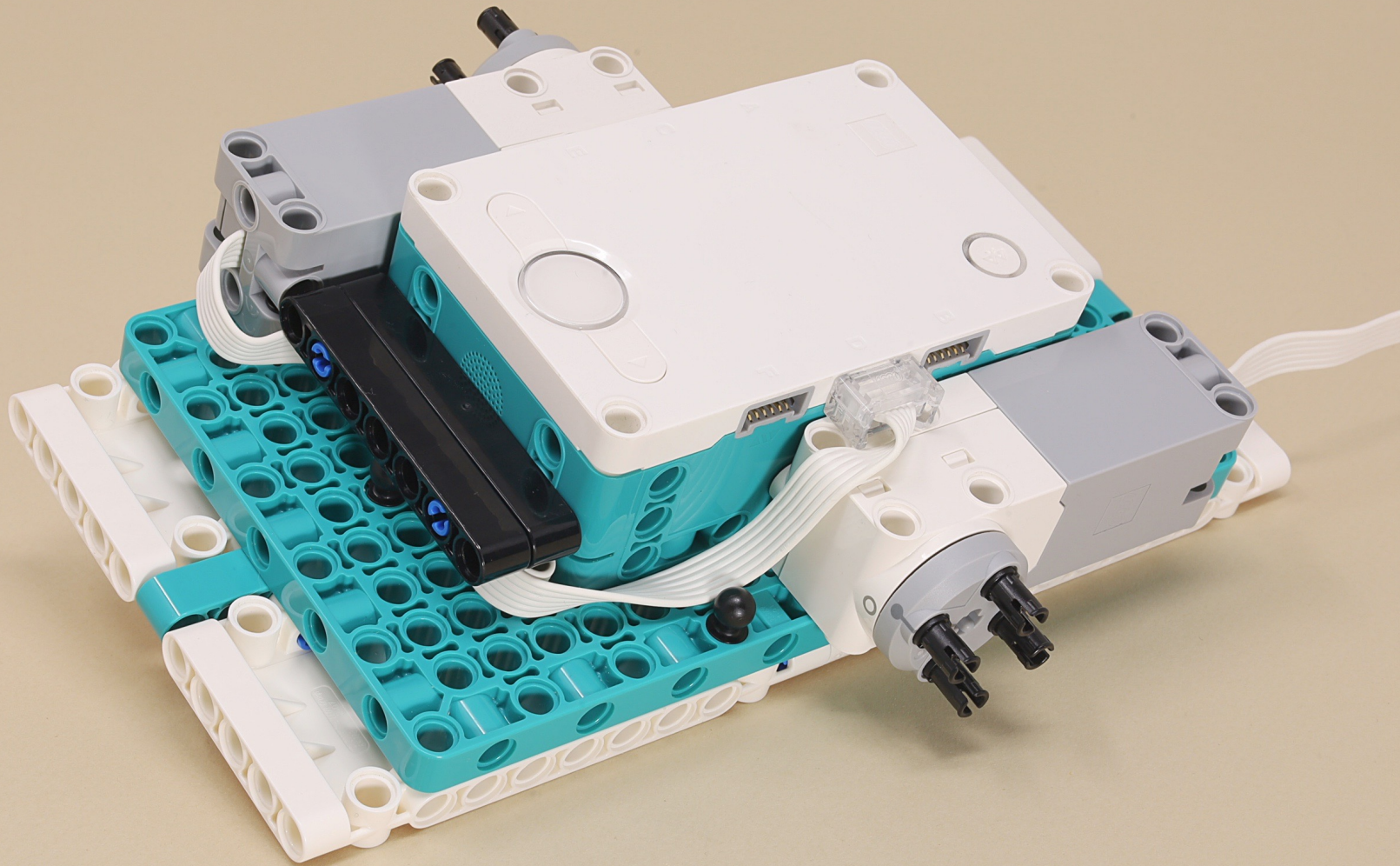


7

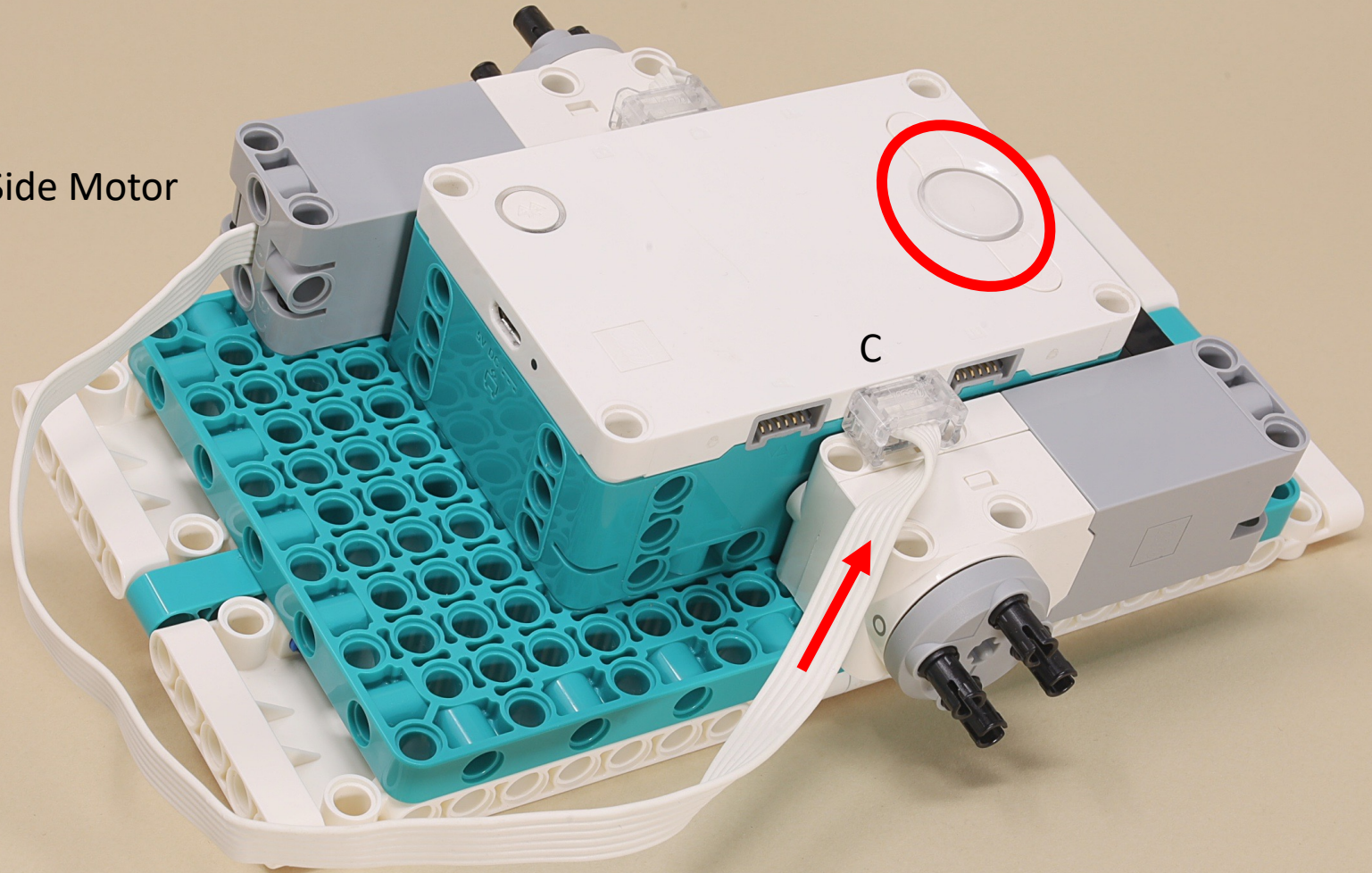
D = Left Side Motor

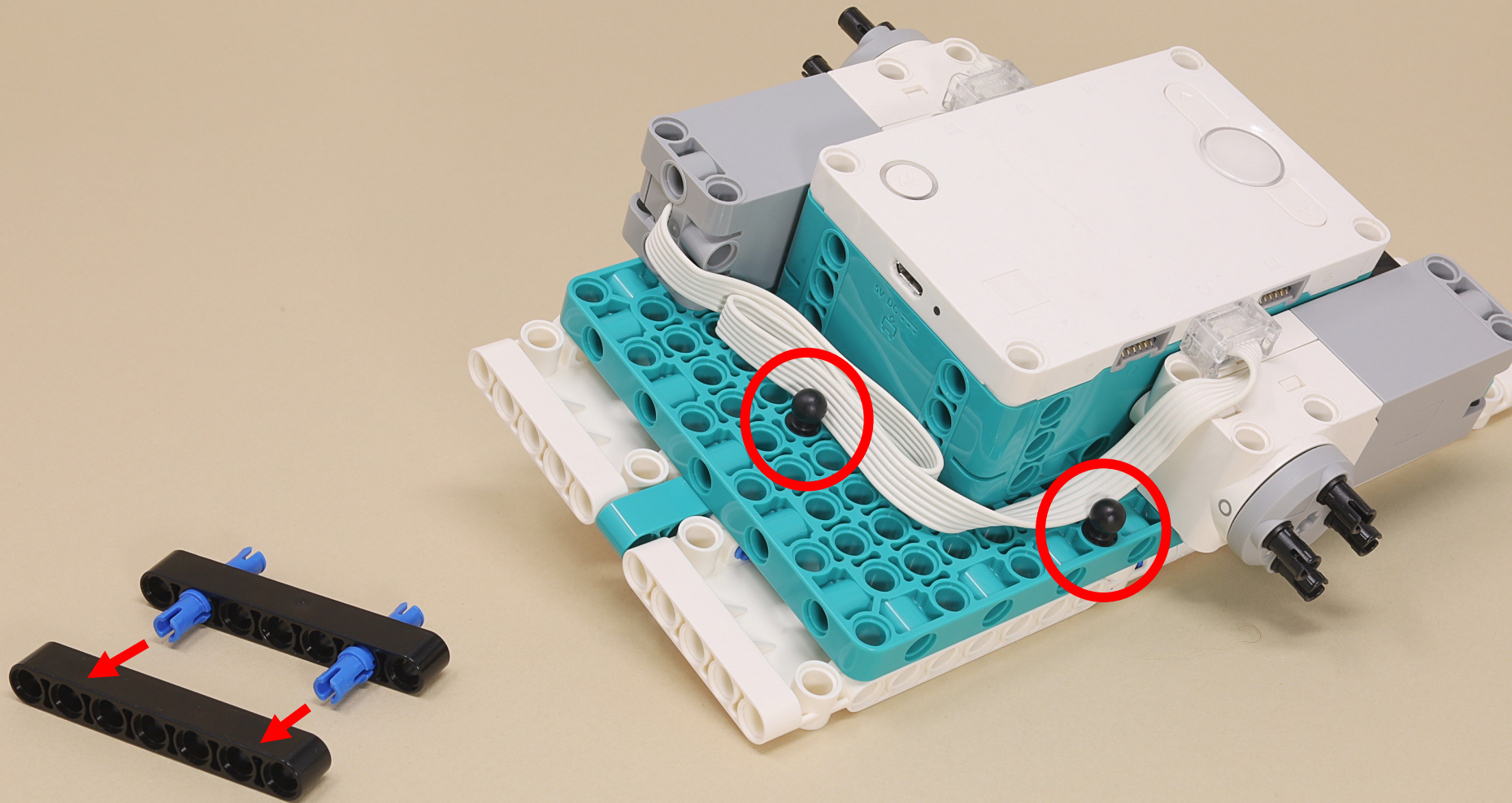




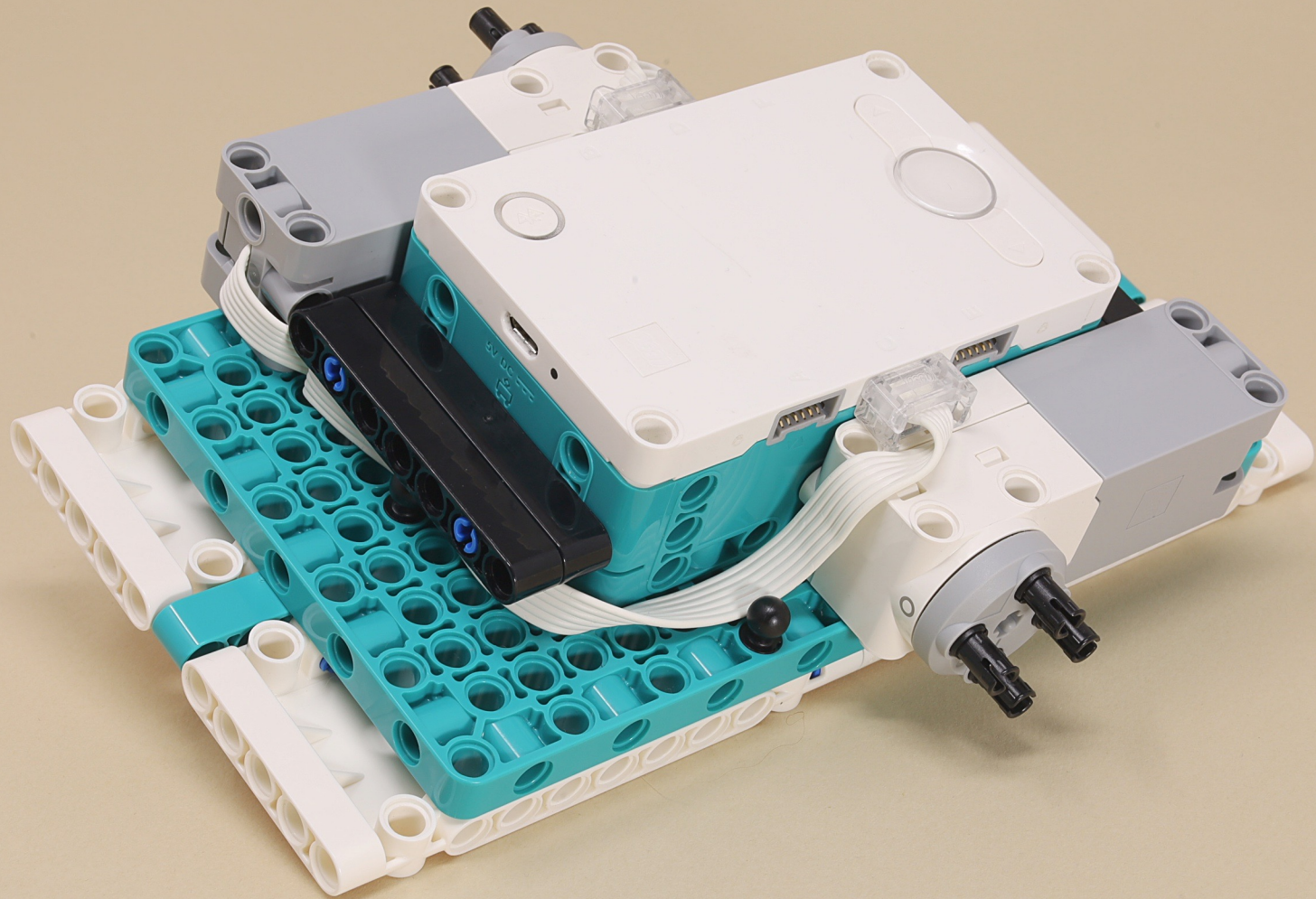


C = Right Side Motor











15



15



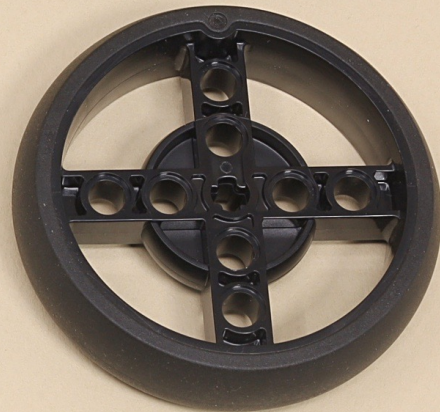
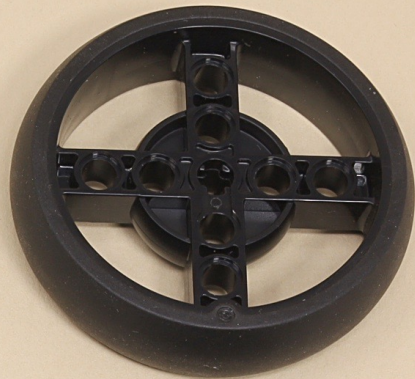
11

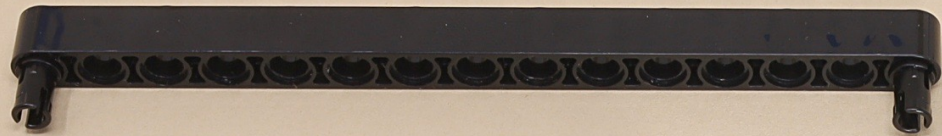


7



(18 x)





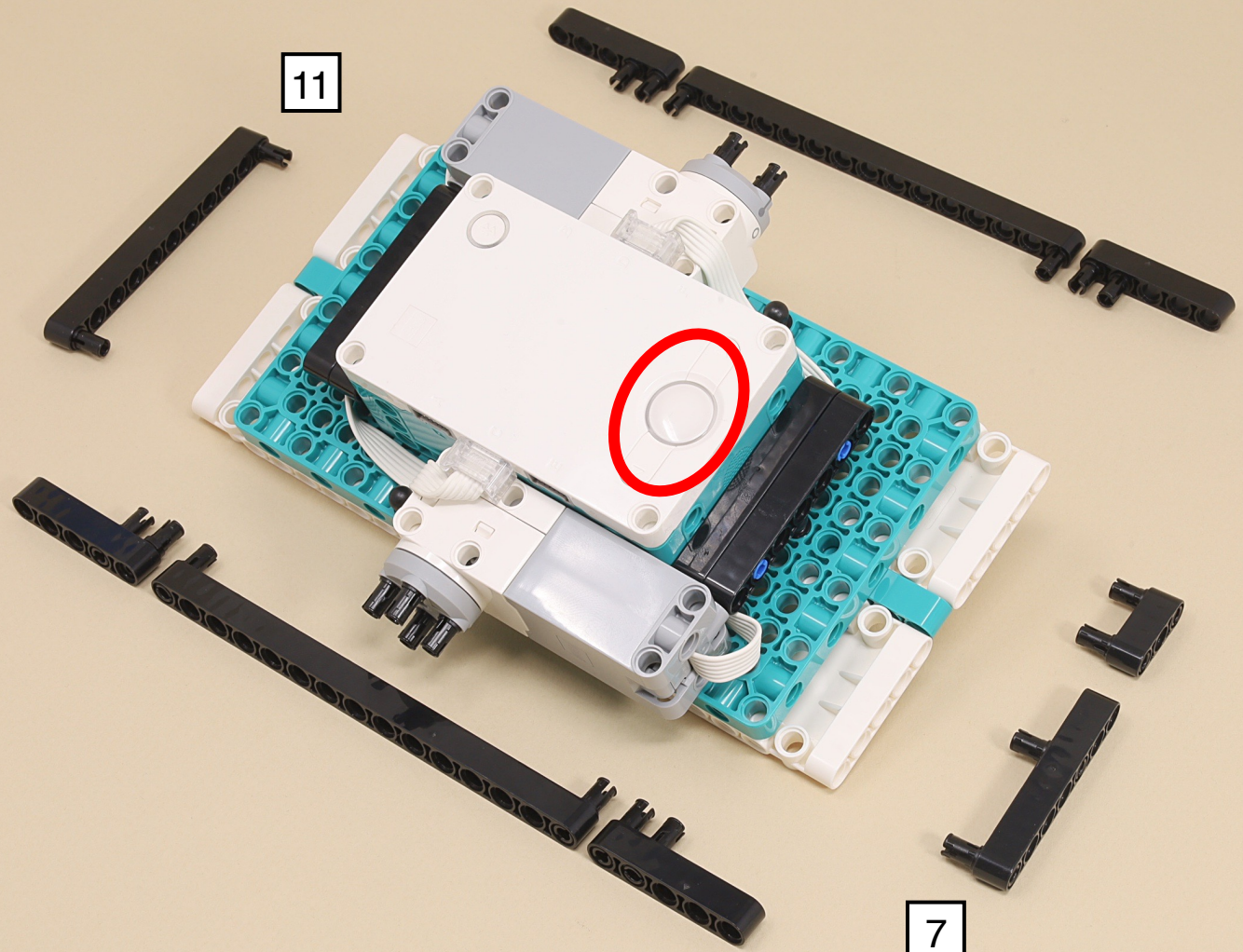
11



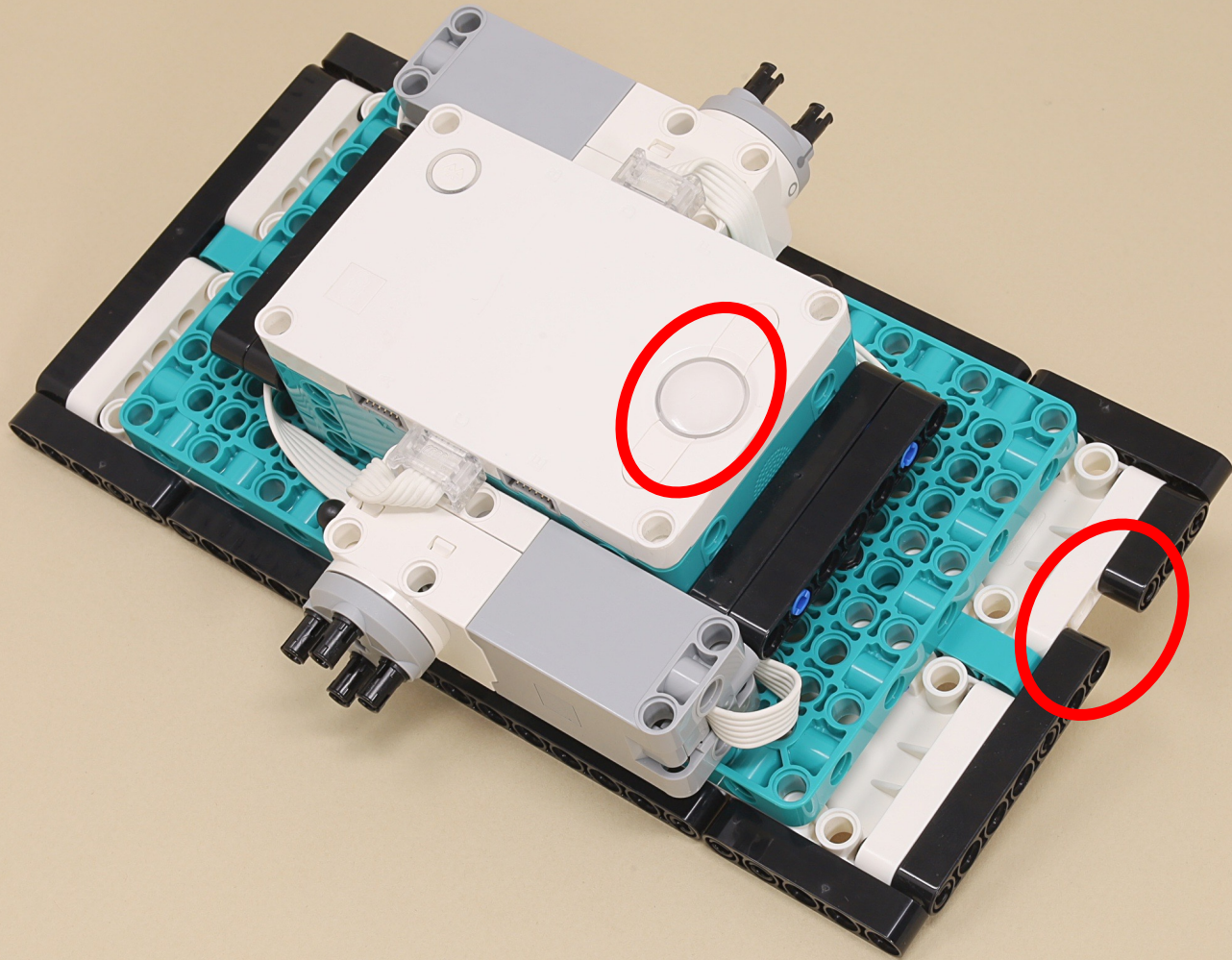
7

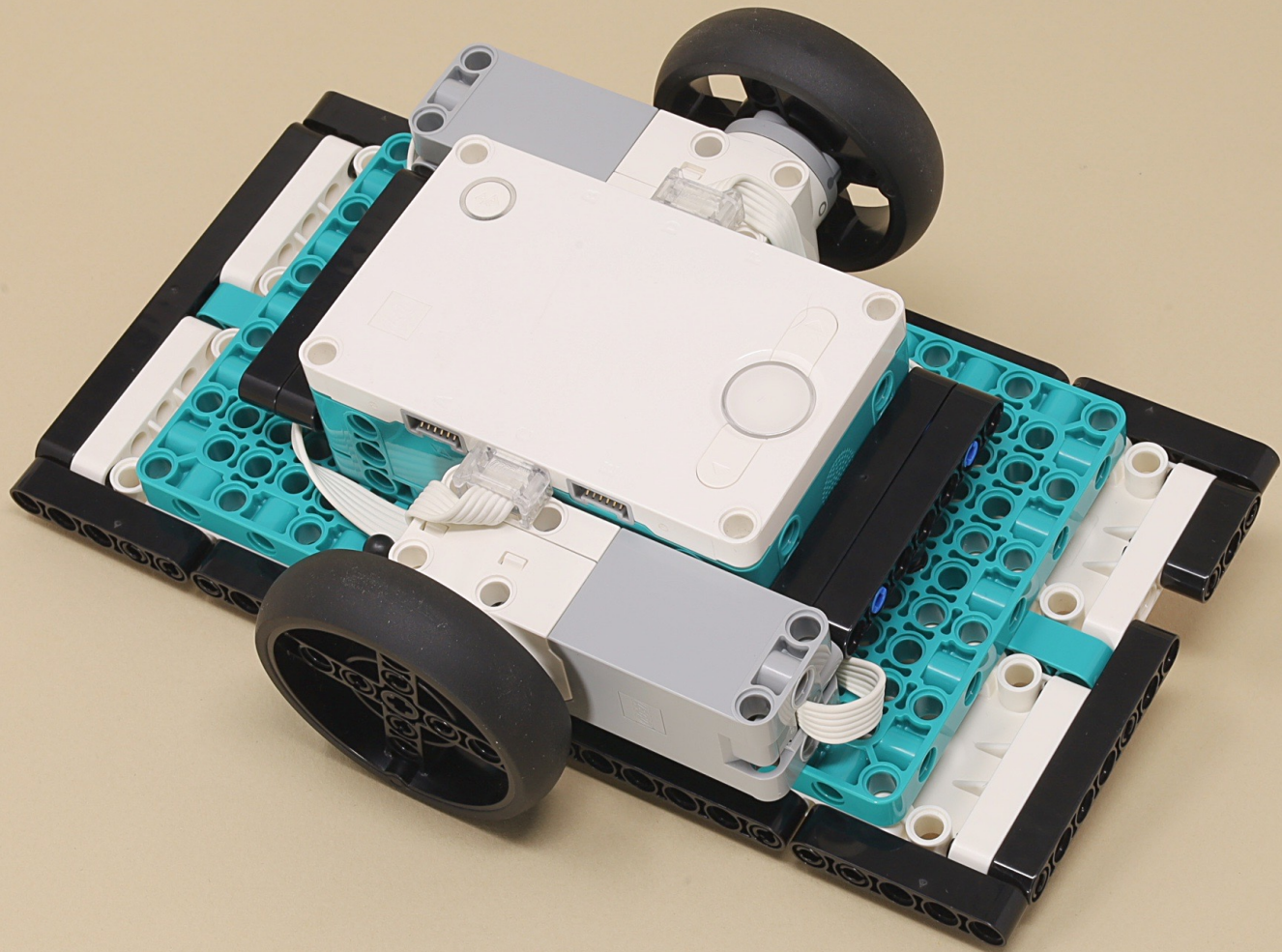


11

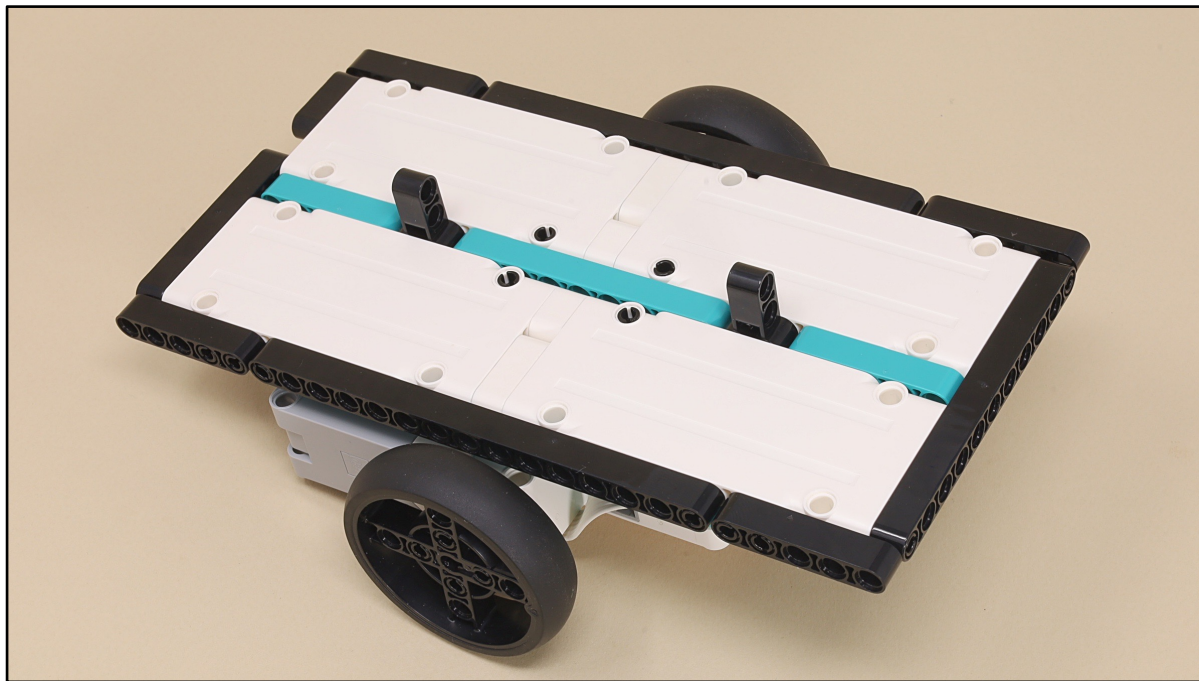


7

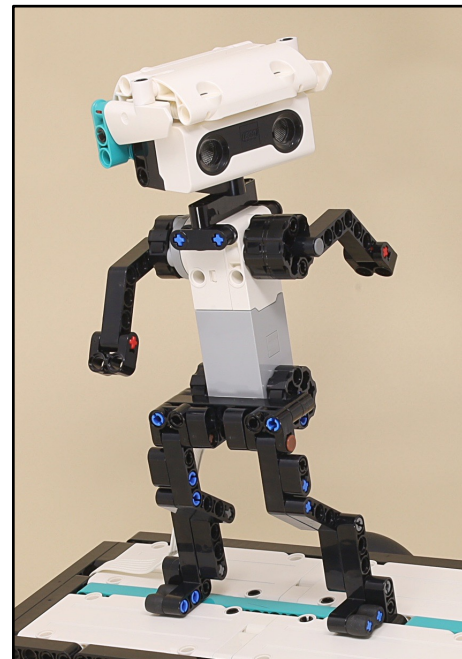




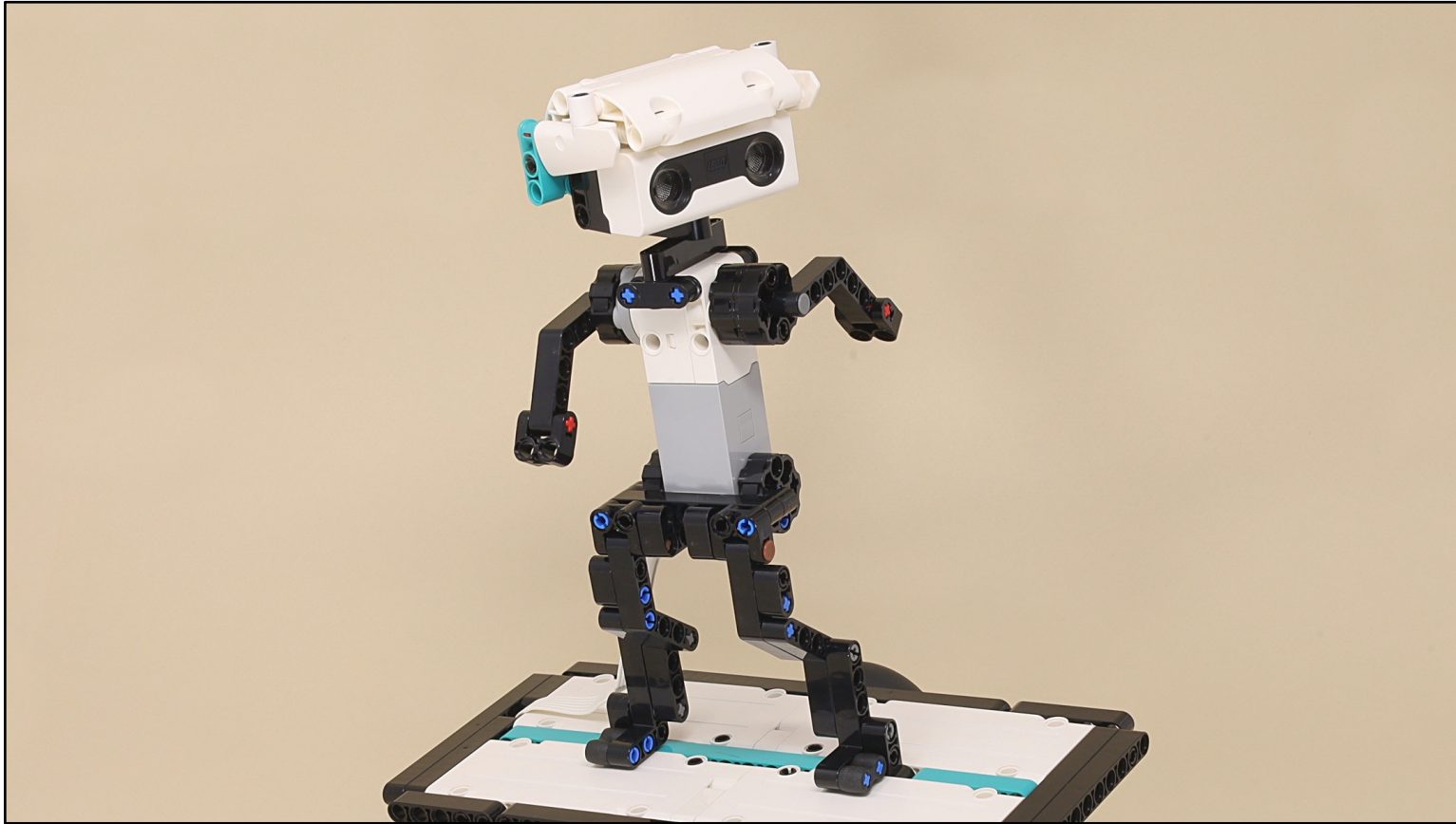
The basic board is complete.



...Now add the Rider



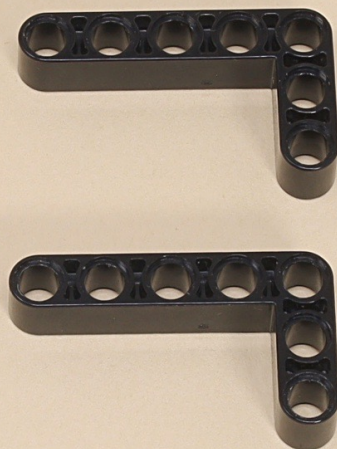
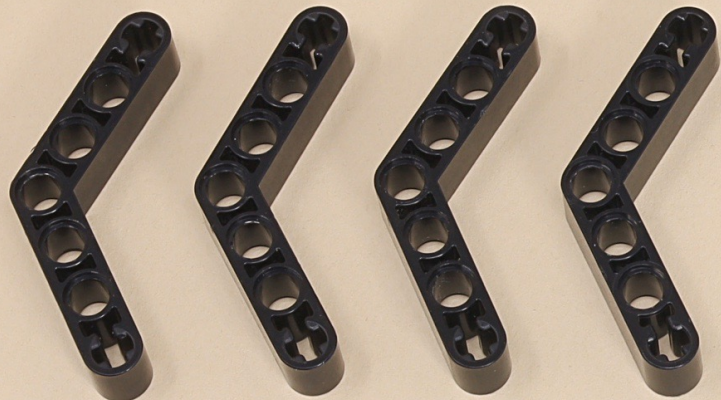
# Rider for Balance Board



Scroll for  
building  
instructions

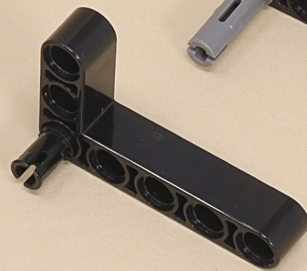
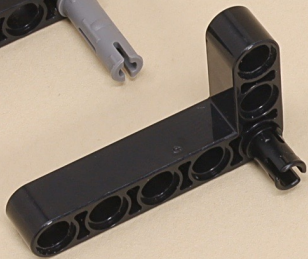
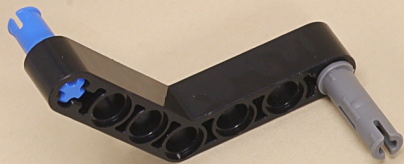


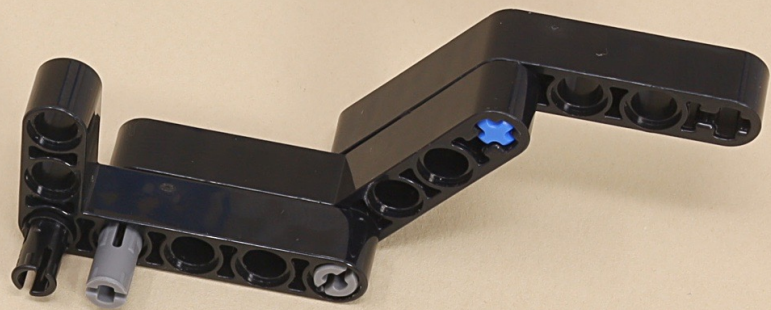
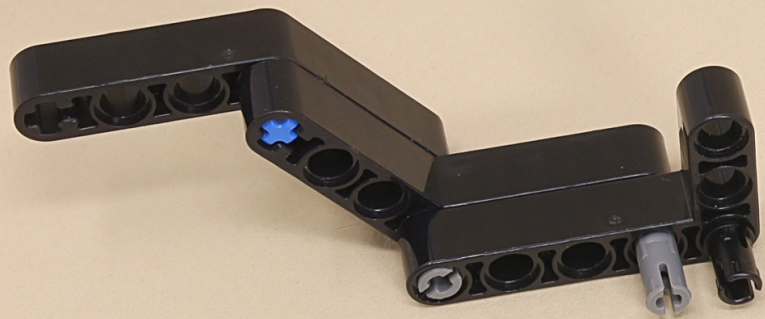


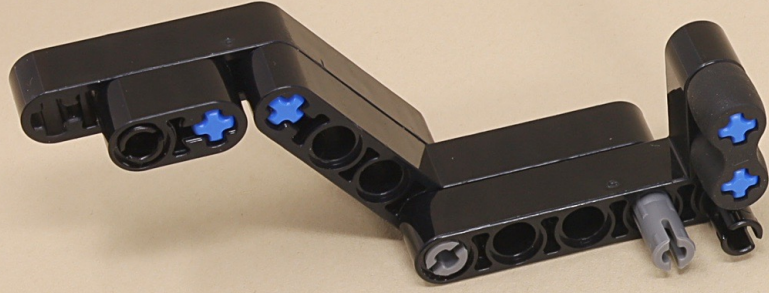


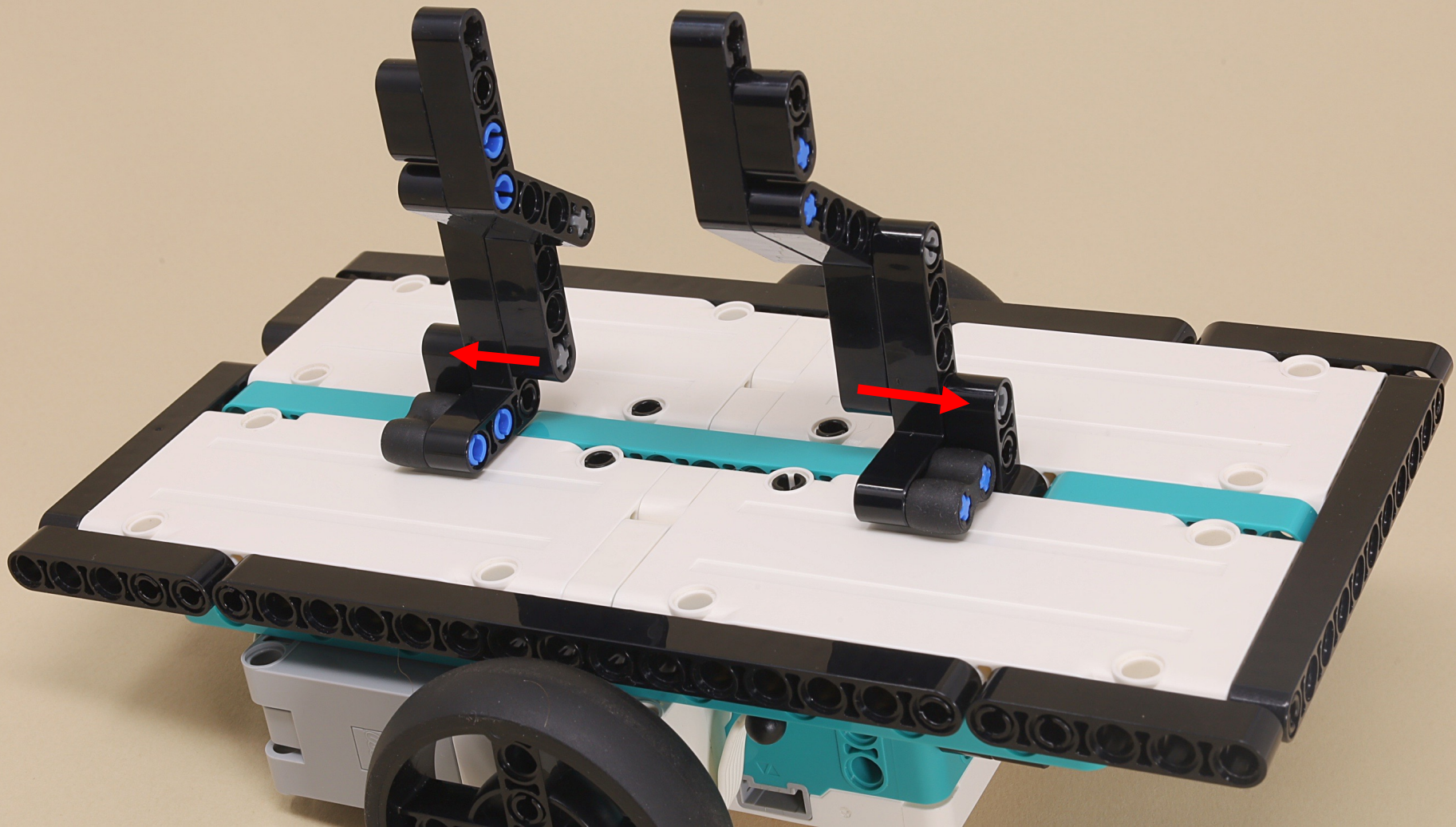
**(8 x)**

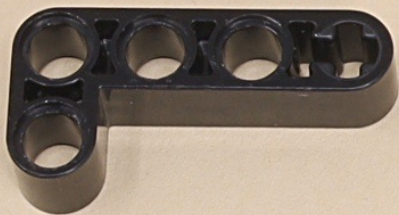




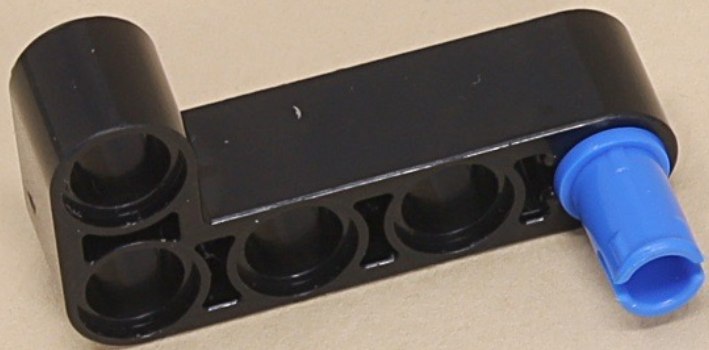












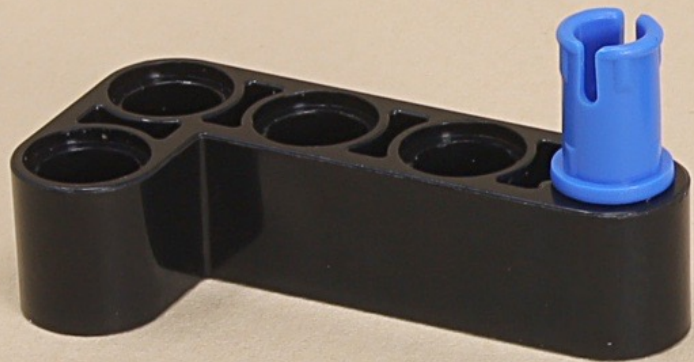




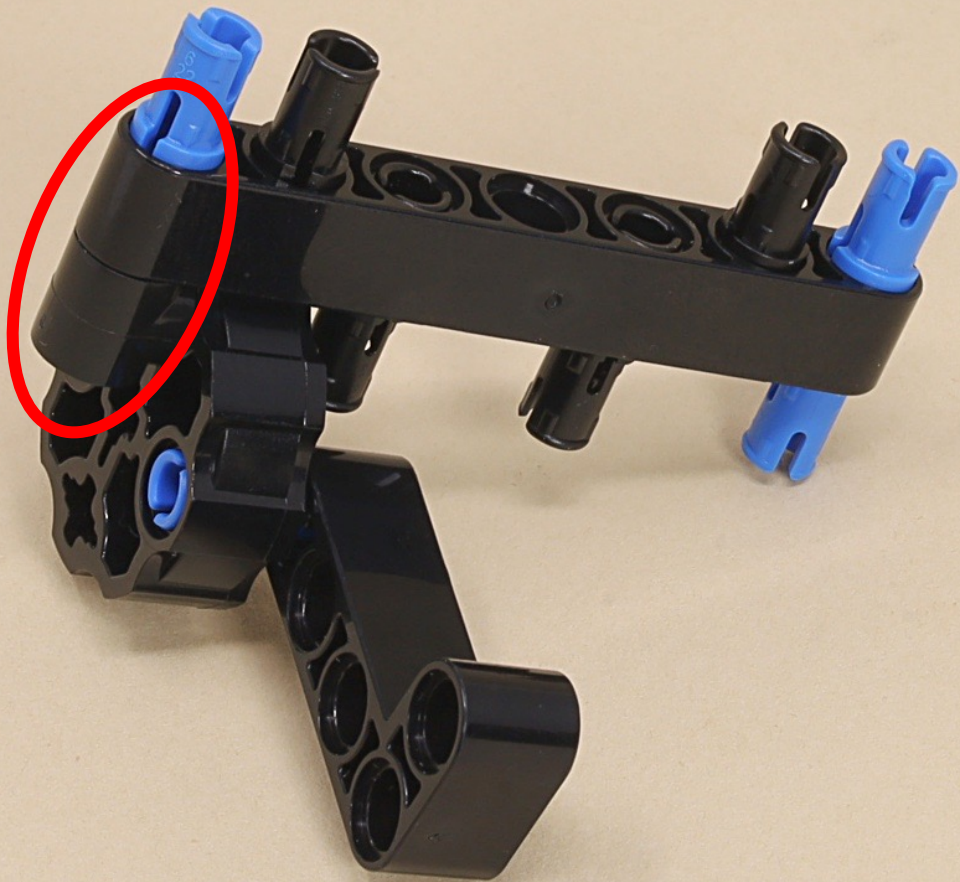


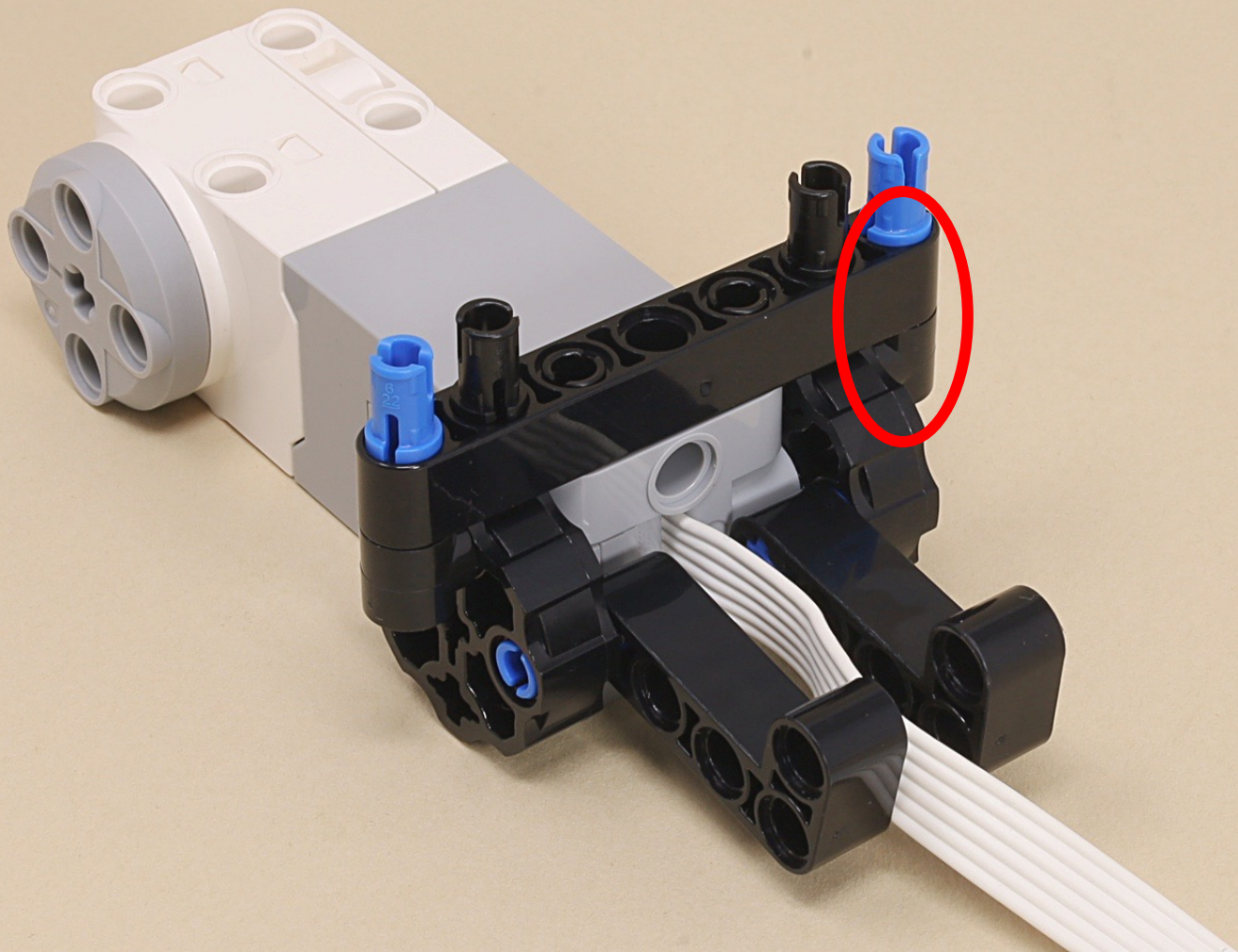
7

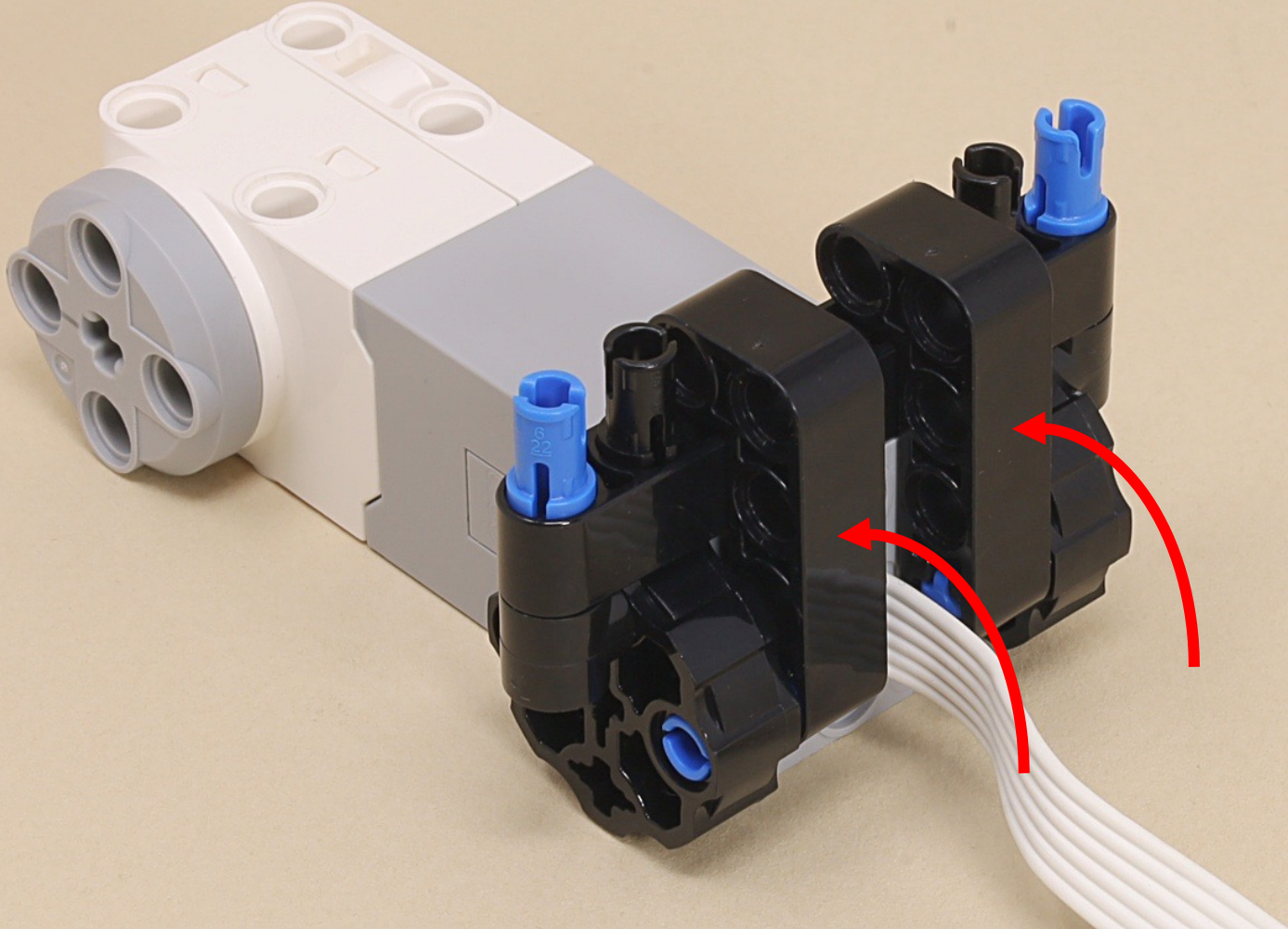












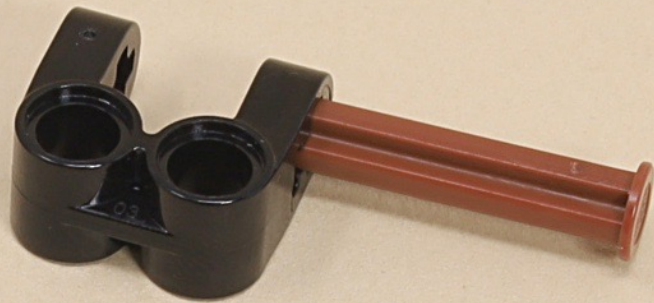


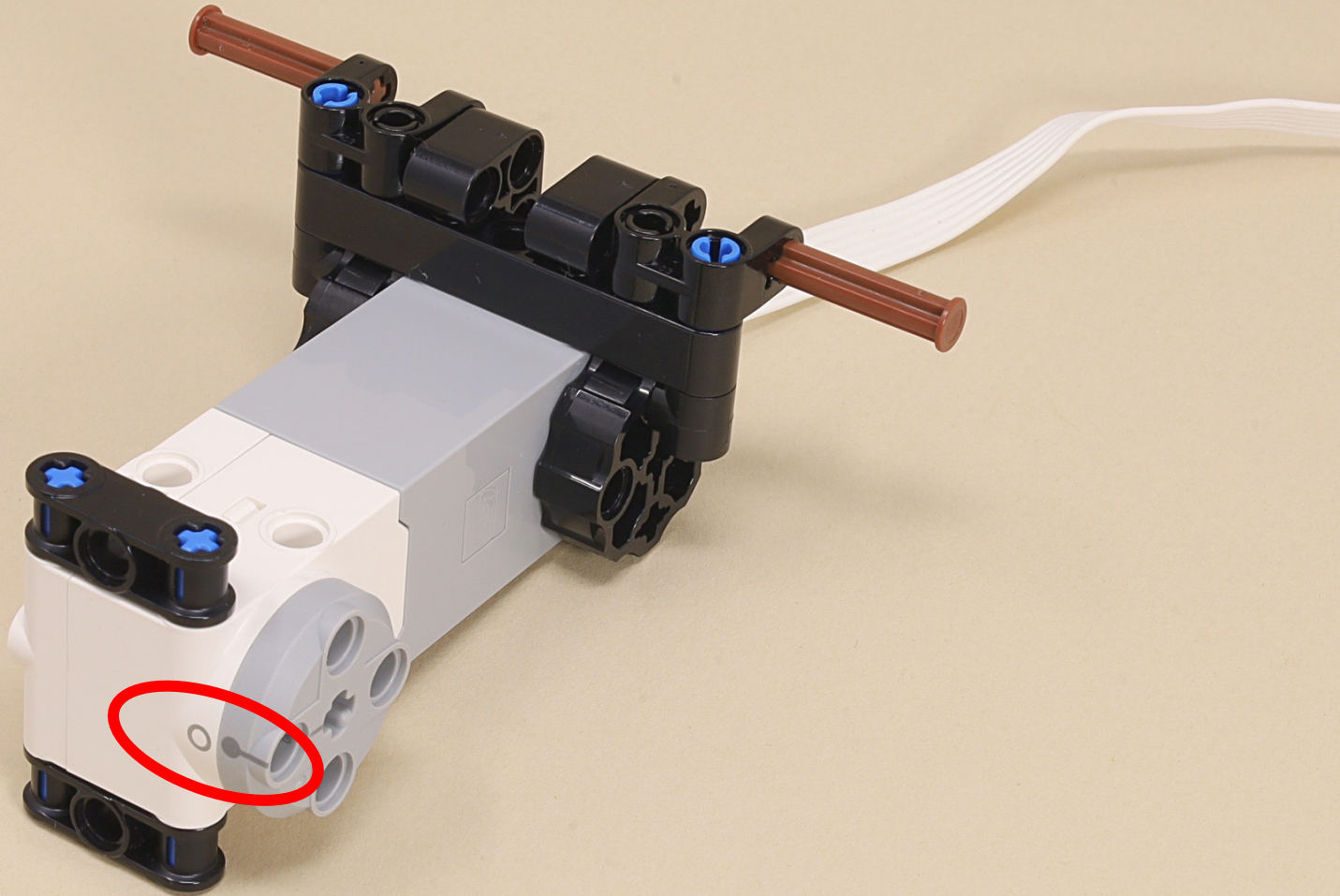
3

3

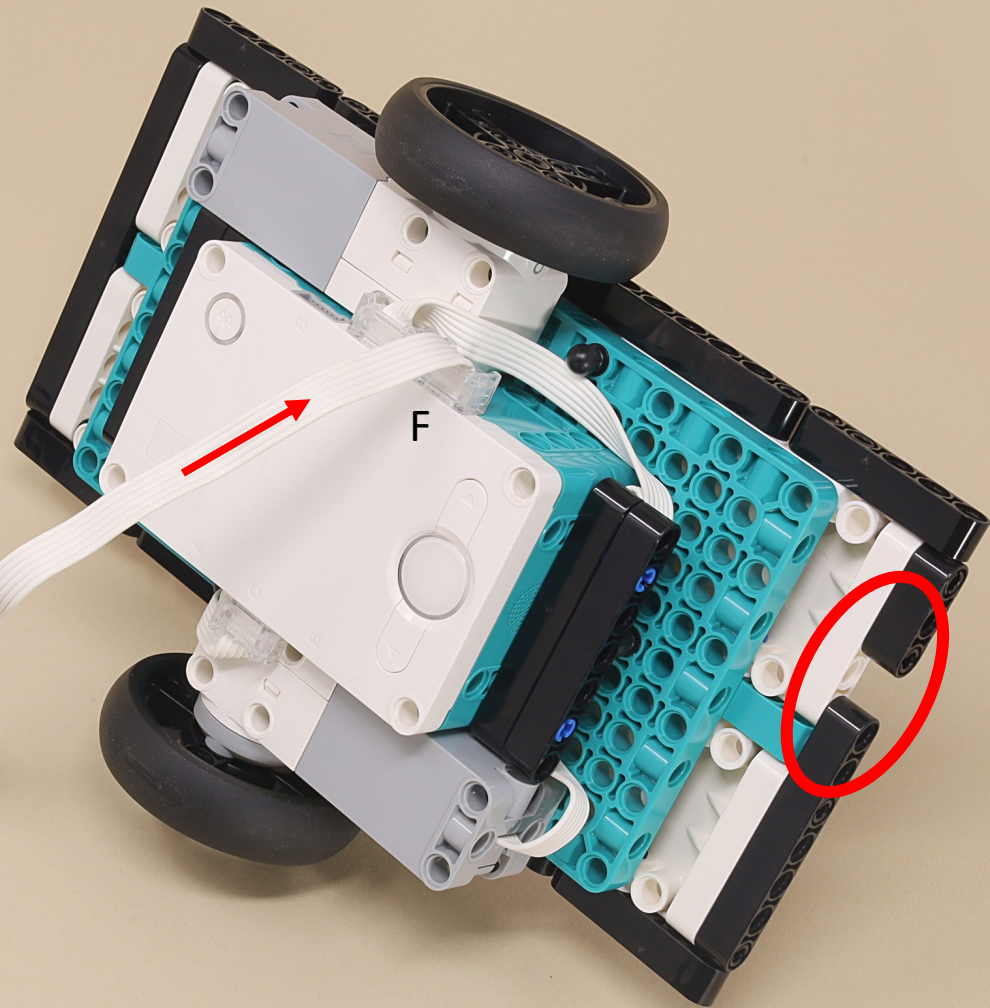
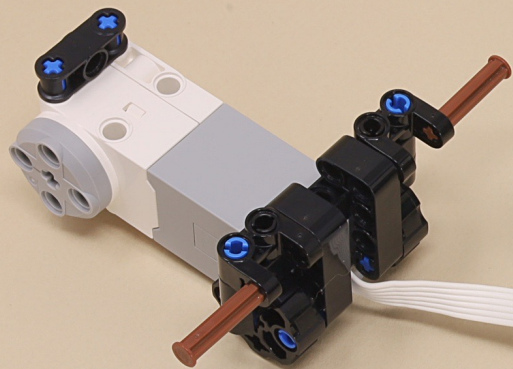


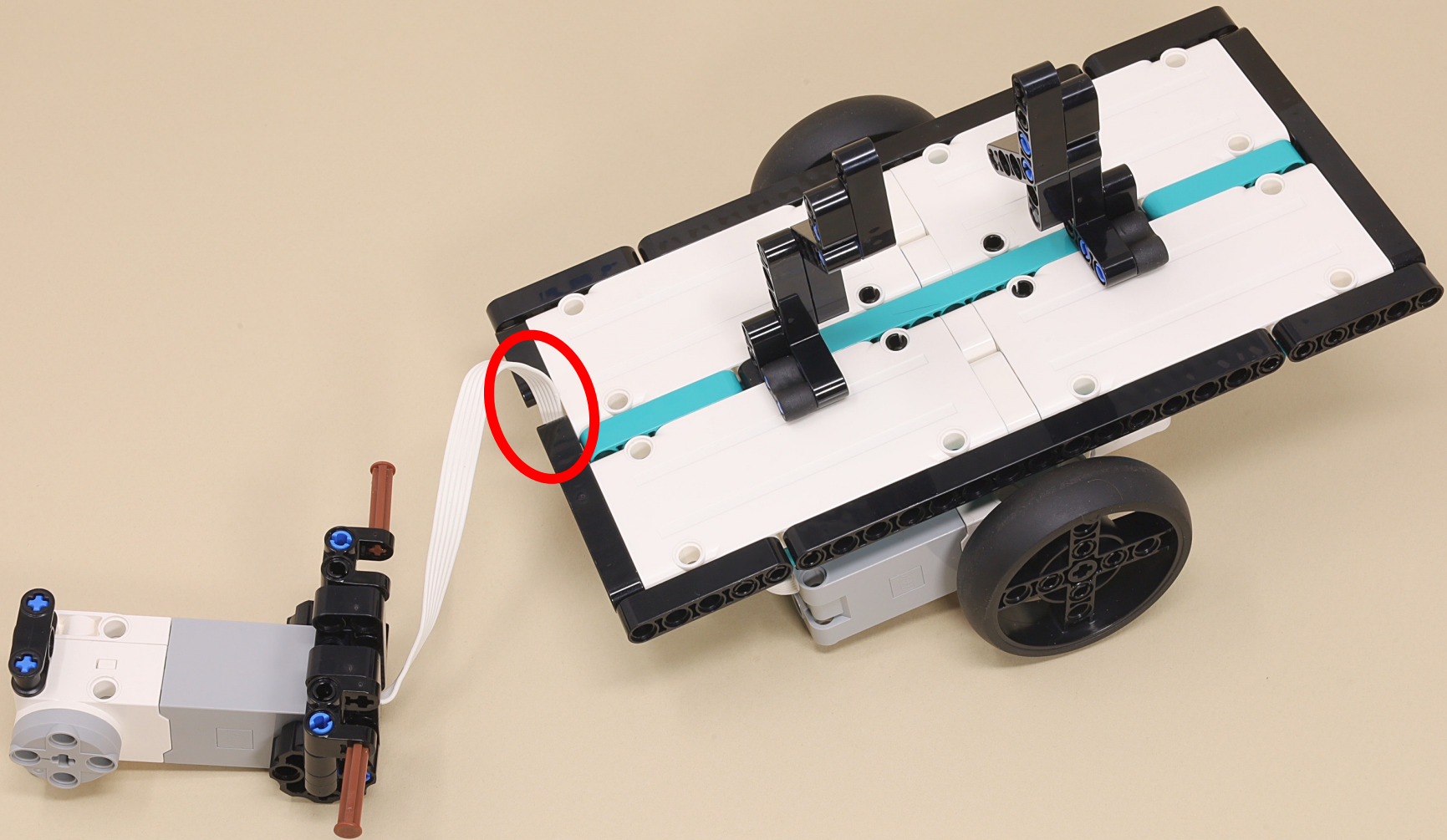






F = Rider Motor





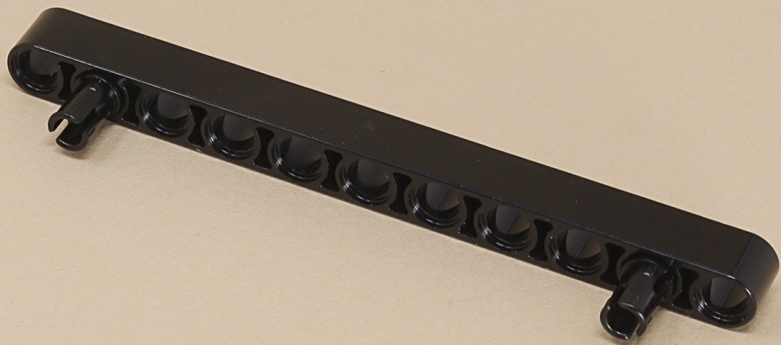
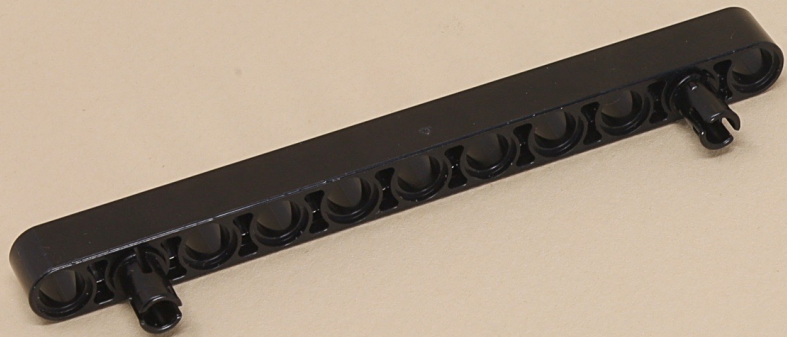


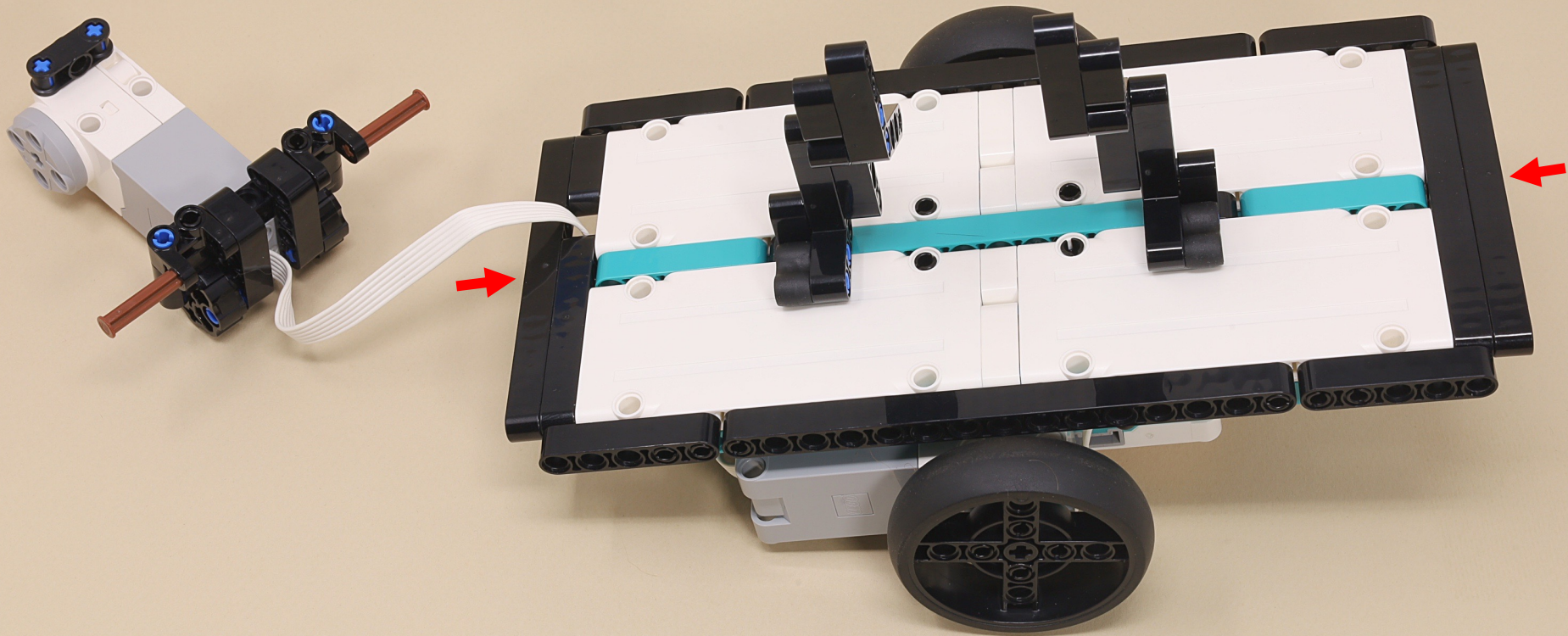
11

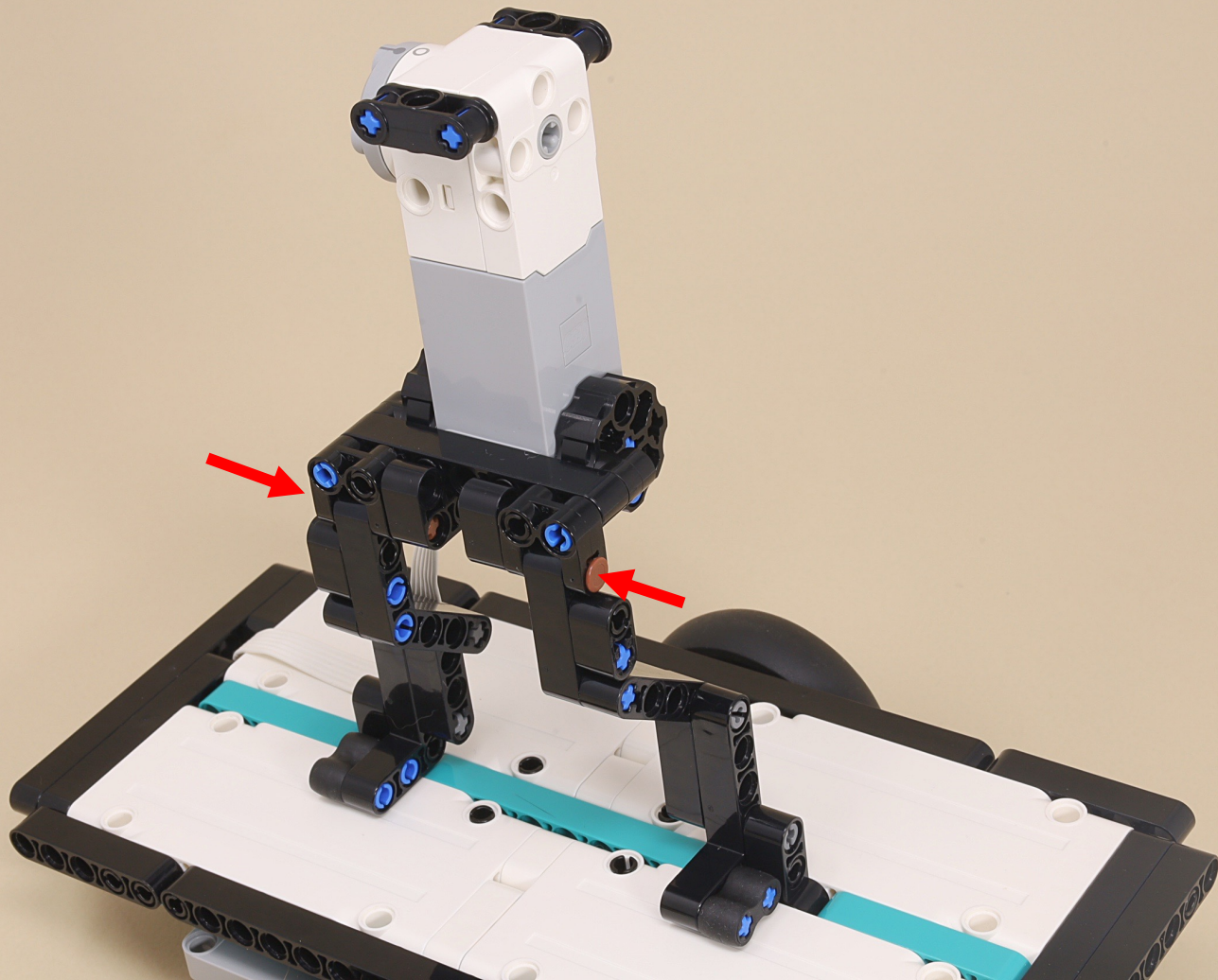


11

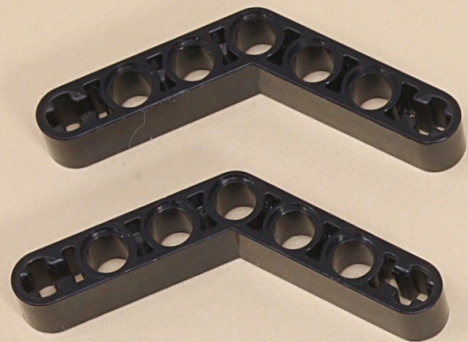












4



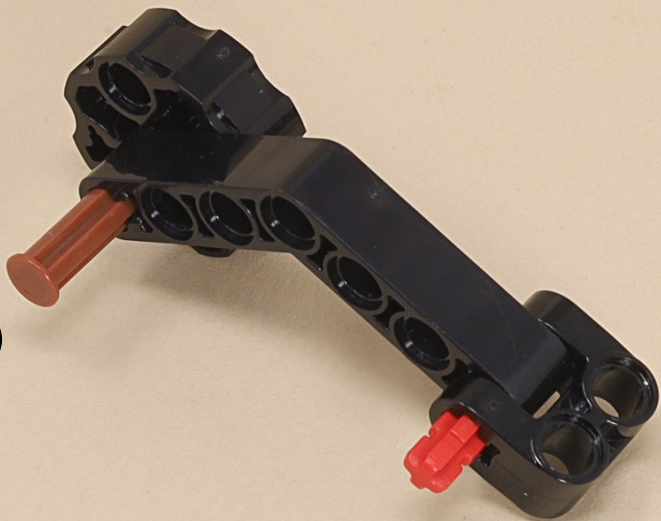
3



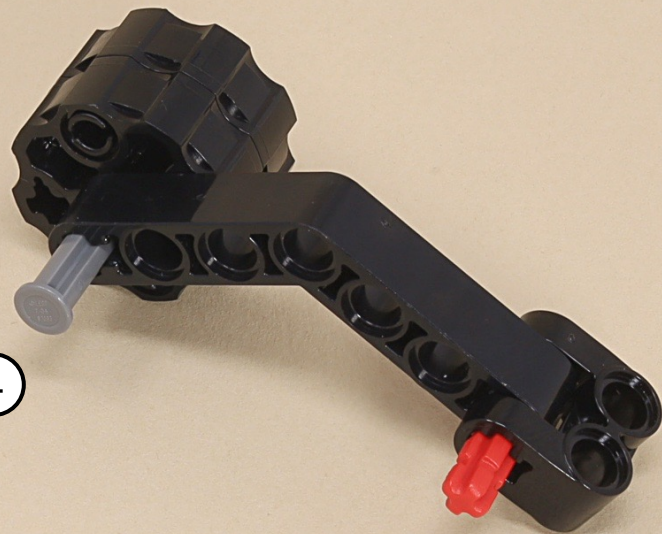


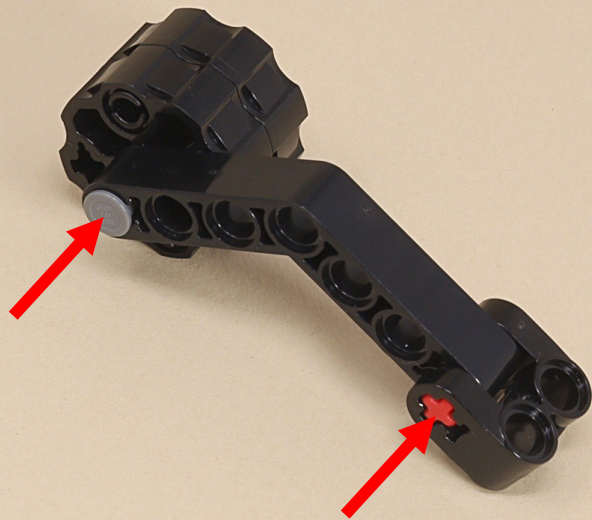
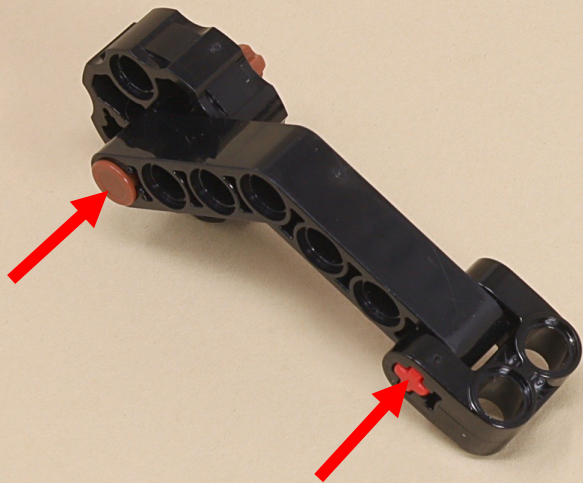


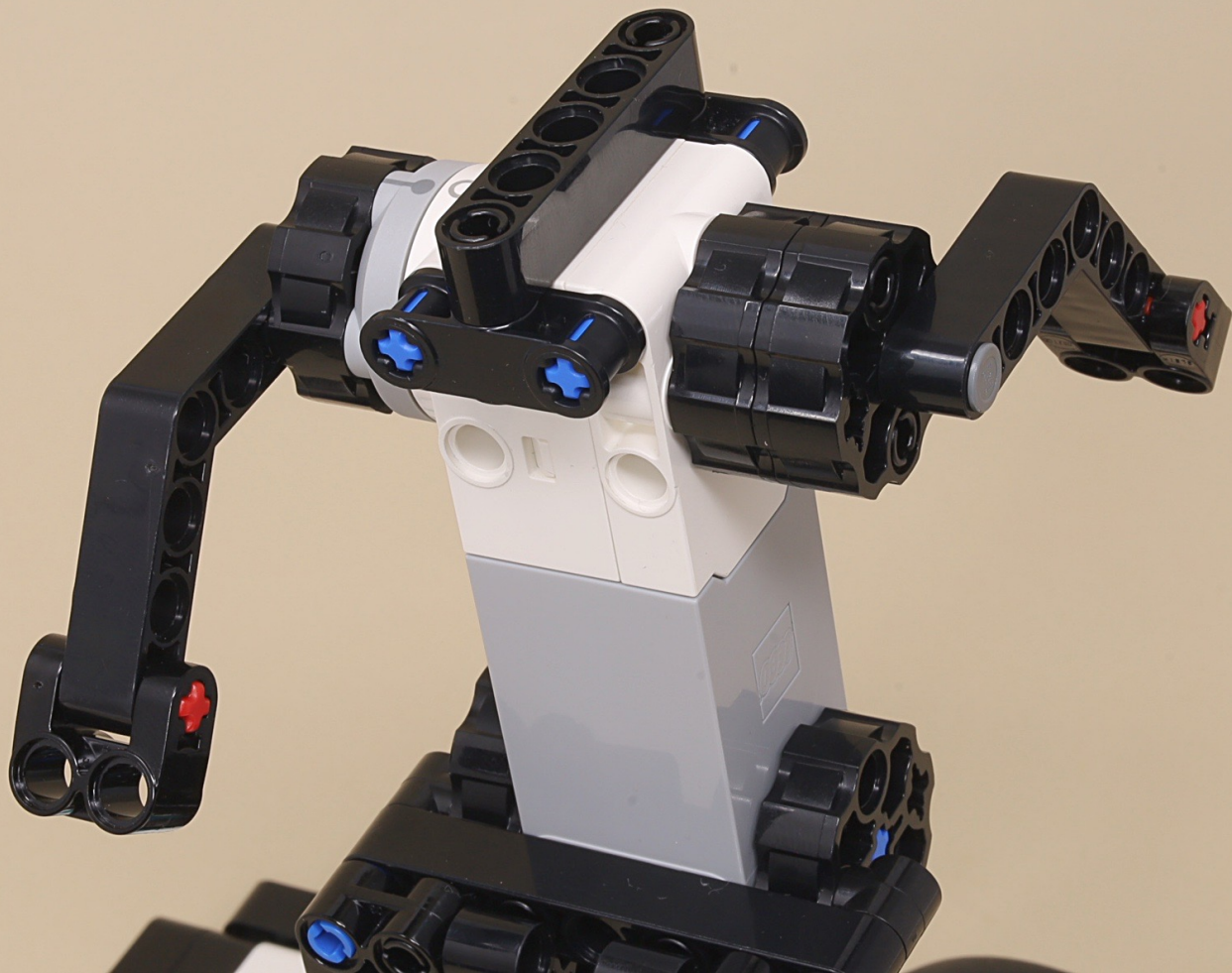
3

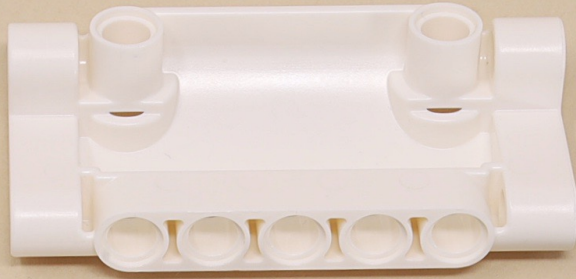
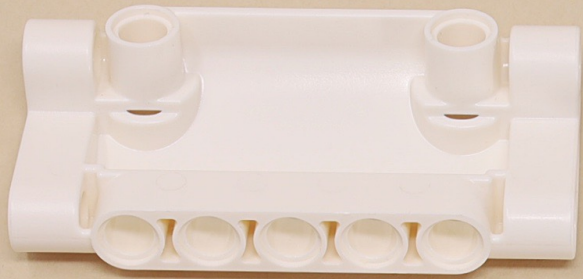


4



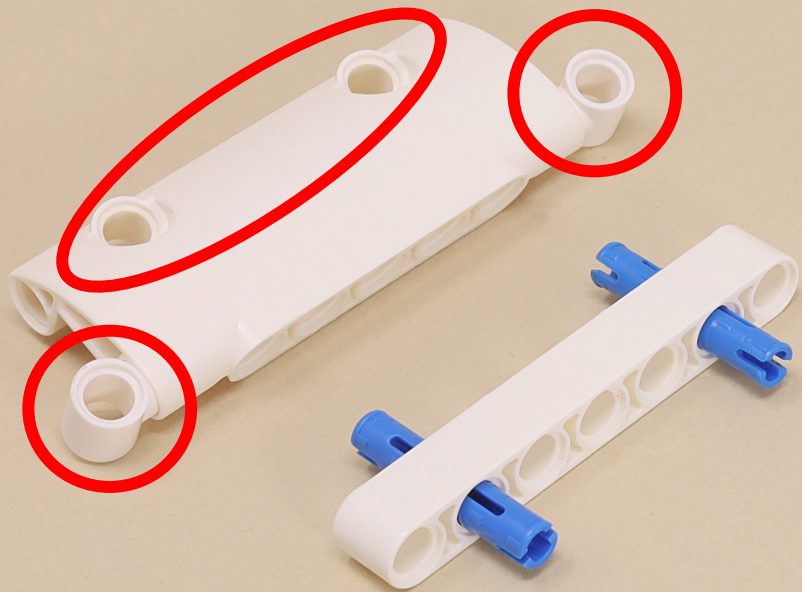




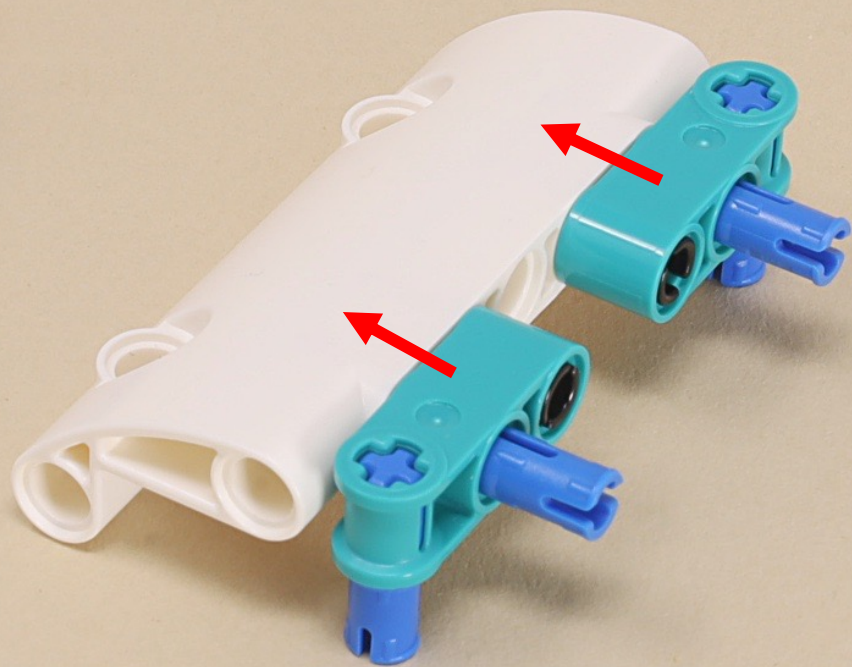
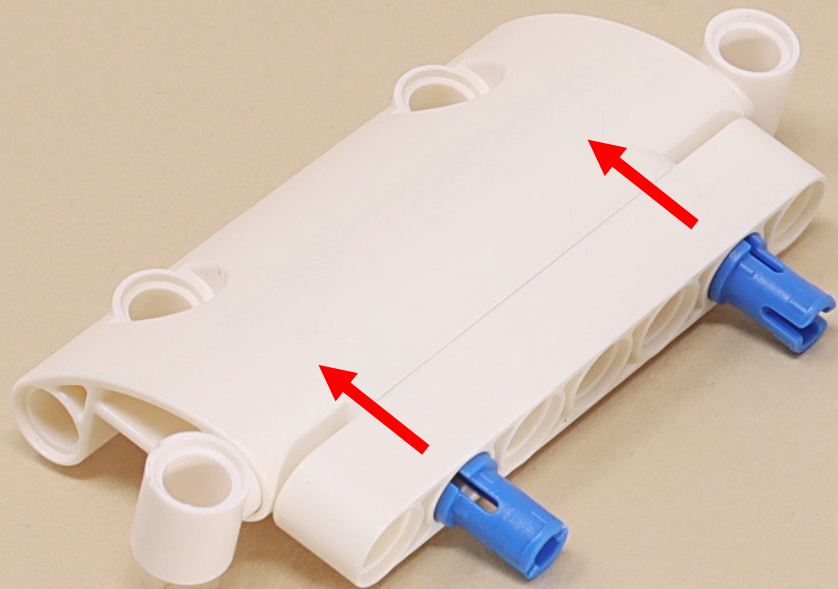


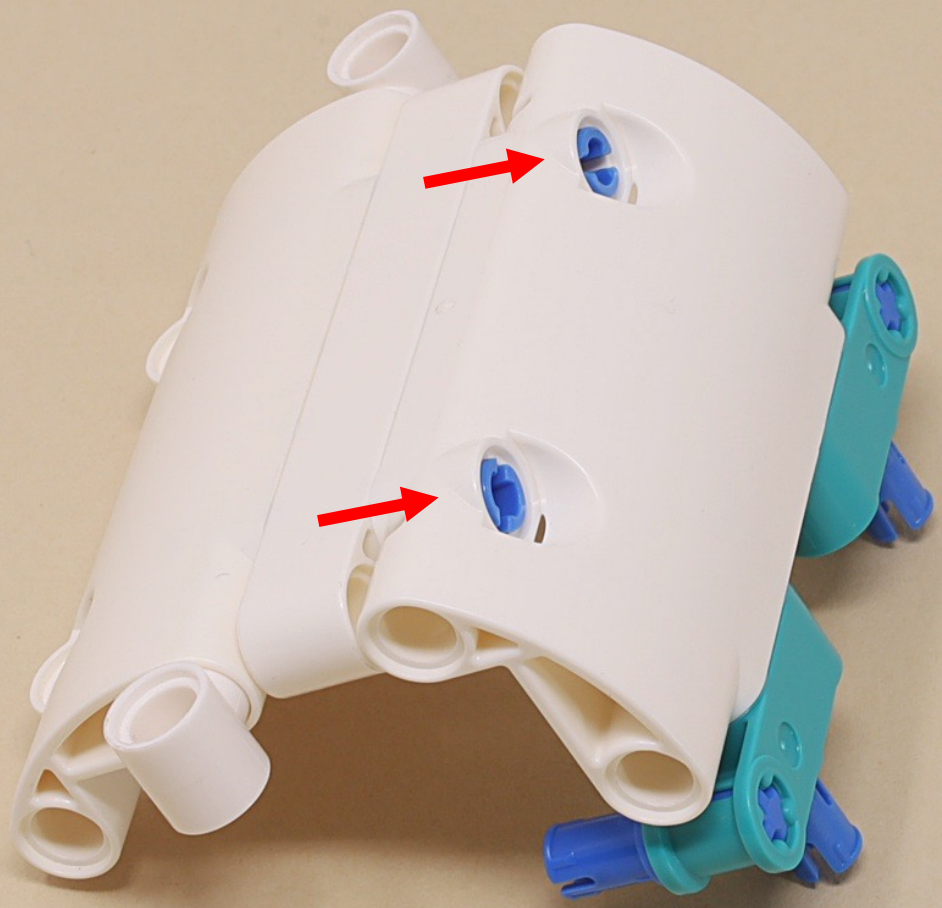
7

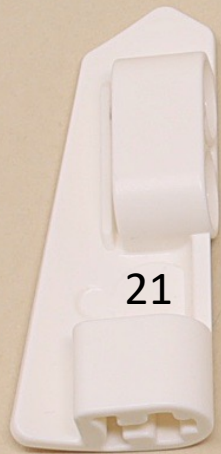




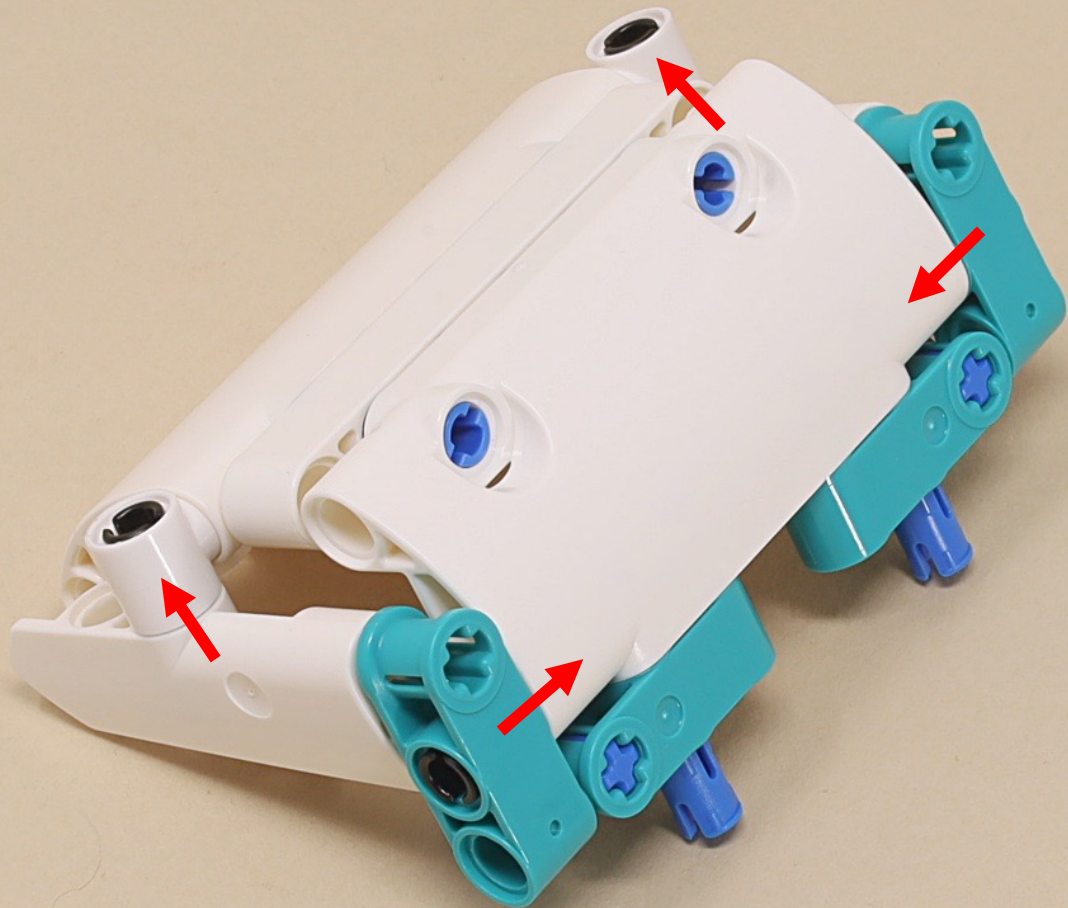


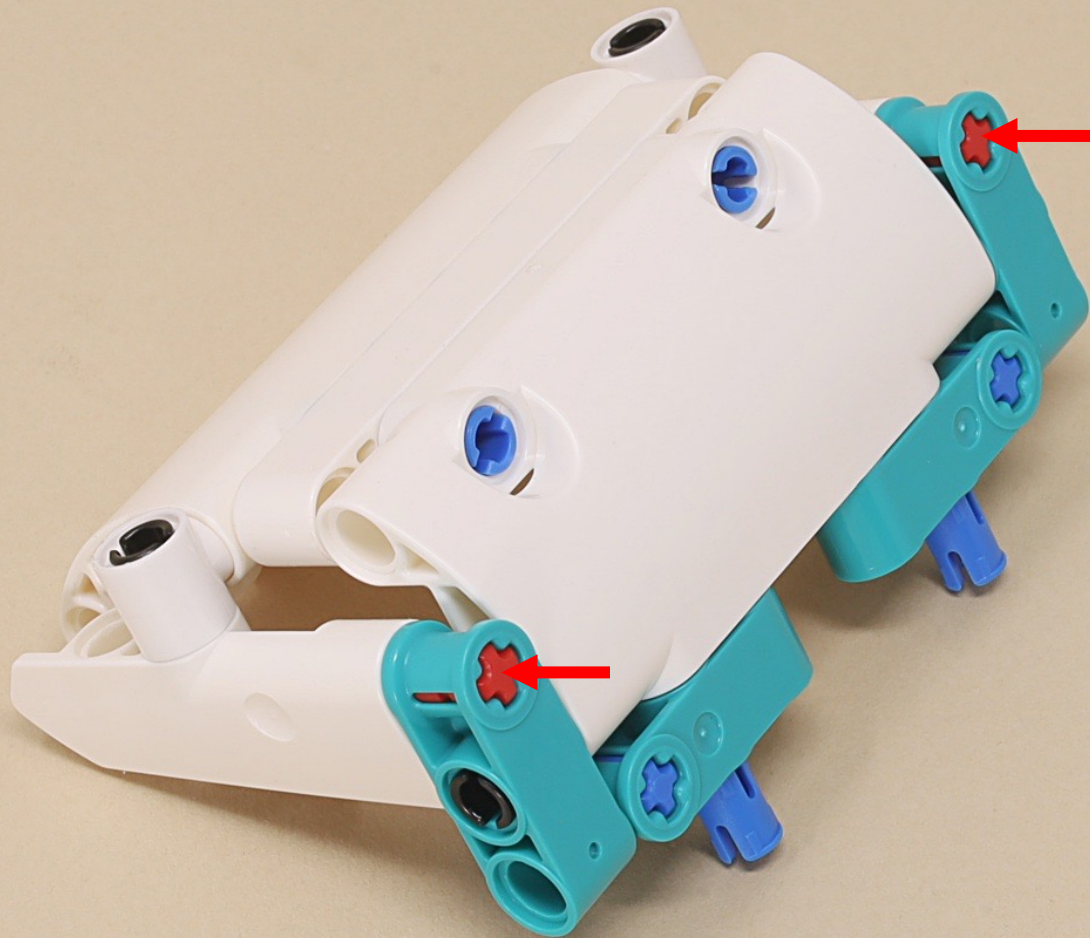




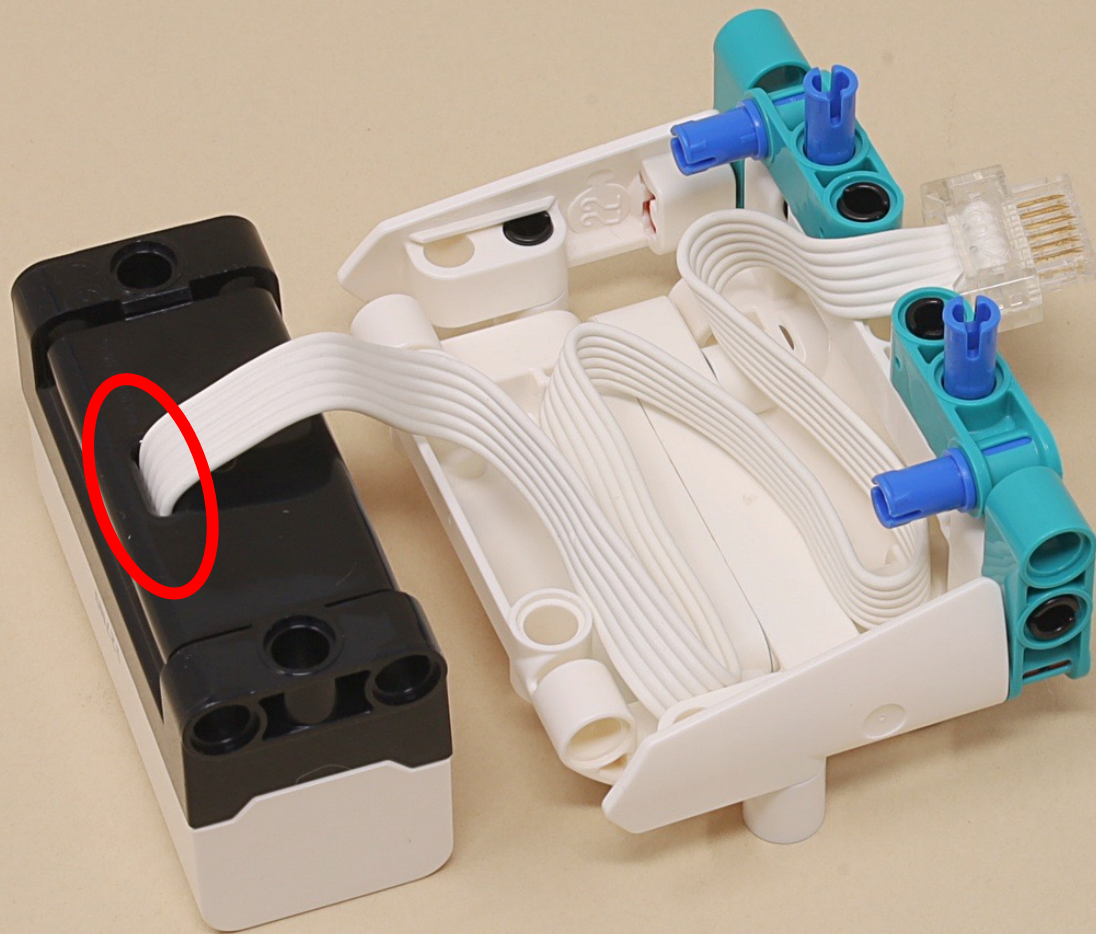












The distance sensor is just for show on this model, so the cable will hide inside the rider's helmet.



Flatten most of the cable against the helmet so it will fit inside.

